



ENTRANCE MATS AND TILES

LOGO MATS

ANTI-FATIGUE MATS

SLIP-RESISTANT MATS

**COMMERCIAL MATTING  
CATALOG**

Fall 2019



M+A MATTING



## M+A Matting • Satisfaction Guaranteed

M+A mats are where design and function come together, where quality isn't compromised to meet a price point, and where solutions to your maintenance and décor problems come first. We promise our customers an unconditional, 100% satisfaction guarantee for the life of the product.

At M+A, we are committed to reducing our environmental impact. We are continually improving our environmental performance as an integral and fundamental part of our business strategy and operating methods. We have reduced waste going to landfills by 80% and recycle most paper, metal, cardboard, plastic, carpet, and rubber waste we generate. Our commitment is also evident in our development of dozens of mat styles that contain recycled raw materials.

For over five decades, M+A Matting has been America's leader in innovative floor protection systems, industrial safety, anti-fatigue products, and high performance entrance matting. If you are looking for better ways to minimize maintenance, prolong floor surface life, reduce cleaning costs, improve safety, or increase worker comfort, ask for M+A Matting.



# TABLE OF CONTENTS

Mat Symbols.....	2, 3
Preventative Maintenance.....	4
The Right Mat for the Job.....	5

## PAGE 6

### ENTRANCE MATS AND TILES COLLECTION

PRODUCT NAME .....	MAT TYPE .....	LOCATION.....	PAGE
SuperScrape™ .....	Scraper.....	Indoor/Outdoor.....	8
SuperScrape Plus®.....	Scraper.....	Indoor/Outdoor.....	9
Flex Tip™.....	Scraper.....	Outdoor.....	10
Frontier.....	Scraper.....	Indoor/Outdoor.....	10
Brush Hog™.....	Scraper.....	Outdoor.....	11
<b>The Wonderful World of WaterHog.....</b>			<b>12,13</b>
WaterHog®.....	Scraper/Wiper.....	Indoor/Outdoor.....	14
WaterHog® Drainable.....	Scraper/Wiper.....	Indoor/Outdoor.....	14
WaterHog® Diamond.....	Scraper/Wiper.....	Indoor/Outdoor.....	15
WaterHog® Legacy.....	Scraper/Wiper.....	Indoor/Outdoor.....	16
WaterHog® Grand.....	Scraper/Wiper.....	Indoor/Outdoor.....	17
WaterHog® Modular Tiles.....	Scraper/Wiper.....	Indoor/Outdoor.....	18
WaterHog® Tiles.....	Scraper/Wiper.....	Indoor/Outdoor.....	19
WaterHog® Eco Tiles.....	Scraper/Wiper.....	Indoor/Outdoor.....	19
WaterHog® Eco Premier.....	Scraper/Wiper.....	Indoor/Outdoor.....	20
WaterHog® Eco Elite.....	Scraper/Wiper.....	Indoor/Outdoor.....	21
WaterHog® Eco Legacy.....	Scraper/Wiper.....	Indoor/Outdoor.....	22
WaterHog® Eco Grand.....	Scraper/Wiper.....	Indoor/Outdoor.....	23
WaterHog® Eco Elite Roll Goods.....	Scraper/Wiper.....	Indoor/Outdoor.....	24
WaterHog® Plus.....	Scraper/Wiper.....	Indoor/Outdoor.....	25
WaterHog® Diamondcord.....	Scraper/Wiper.....	Indoor.....	26
WaterHog® Masterpiece® Select.....	Scraper/Wiper.....	Indoor.....	26
WaterHog® Low Profile.....	Scraper/Wiper.....	Indoor.....	27
Berber Roll Goods.....	Wiper.....	Indoor/Outdoor.....	27
MicroLux™.....	Wiper.....	Indoor.....	28
Plush™.....	Wiper.....	Indoor.....	28
ColorStar®.....	Wiper.....	Indoor.....	29
Enviro Plus®.....	Wiper.....	Indoor.....	29
Stylist.....	Wiper.....	Indoor.....	30
Impressionist.....	Wiper.....	Indoor.....	30
Cobblestone.....	Wiper.....	Indoor.....	31
Victory.....	Wiper.....	Indoor.....	31
<b>Logo Mats.....</b>			<b>34</b>
ColorStar® Impressions.....	Wiper.....	Indoor.....	35
Classic Impressions™ HD.....	Wiper.....	Indoor.....	36
Classic Impressions™ HD Custom Shape.....	Wiper.....	Indoor.....	36
WaterHog Impressions HD®.....	Scraper/Wiper.....	Indoor/Outdoor.....	37
Berber Roll Goods Inlay.....	Wiper.....	Indoor/Outdoor.....	38
WaterHog® Eco Elite Roll Goods Inlay.....	Scraper/Wiper.....	Indoor/Outdoor.....	39
WaterHog® Inlay.....	Scraper/Wiper.....	Indoor/Outdoor.....	40
WaterHog® Legacy Inlay.....	Scraper/Wiper.....	Indoor/Outdoor.....	40
SuperScrape™ Impressions.....	Scraper.....	Indoor/Outdoor.....	41
Hog Heaven® Impressions.....	Anti-Fatigue.....	Indoor.....	41
<b>Benefits of Anti-Fatigue Matting.....</b>			<b>44</b>
GetFit StandUp®.....	Anti-Fatigue.....	Indoor.....	45
Hog Heaven® Plush.....	Anti-Fatigue.....	Indoor.....	46
Hog Heaven® Fashion.....	Anti-Fatigue.....	Indoor.....	46
Hog Heaven®.....	Anti-Fatigue.....	Indoor.....	47
Hog Heaven® Marble.....	Anti-Fatigue.....	Indoor.....	48
Hog Heaven Prime®.....	Anti-Fatigue.....	Indoor.....	48
Hog Heaven Prime® Décor.....	Anti-Fatigue.....	Indoor.....	49
Happy Feet®.....	Anti-Fatigue.....	Indoor.....	50
Complete Comfort™.....	Anti-Fatigue.....	Indoor.....	51
Cushion Max™.....	Anti-Fatigue.....	Indoor.....	51
Cushion Station™.....	Anti-Fatigue.....	Indoor.....	52
Complete Comfort™ II.....	Anti-Fatigue.....	Indoor.....	52
Comfort Flow™.....	Anti-Fatigue.....	Indoor.....	53
Comfort Scrape™.....	Anti-Fatigue.....	Indoor.....	53
Comfort Flow™ HD.....	Anti-Fatigue.....	Indoor.....	54
Hog Heaven III™ Comfort.....	Anti-Fatigue.....	Indoor.....	55
Hog Heaven III™ Traffic.....	Anti-Fatigue.....	Indoor.....	56
Kneeling Comfort™.....	Anti-Fatigue.....	Indoor/Outdoor.....	57
Safety Scrape™.....	Slip-Resistant.....	Indoor/Outdoor.....	58
Traction Tread.....	Slip-Resistant.....	Indoor.....	58
Traction Tread Soft.....	Slip-Resistant/Anti-Fatigue.....	Indoor.....	59
Wet Step®.....	Slip-Resistant/Anti-Fatigue.....	Indoor/Outdoor.....	59
Sure Cushion.....	Anti-Fatigue.....	Indoor.....	60
Sure Stride®.....	Slip-Resistant.....	Indoor.....	61
Sure Stride® Plush.....	Slip-Resistant.....	Indoor.....	62
Clean Stride®.....	Clean Room.....	Indoor.....	64
CleanShield® Urinal.....	Restroom.....	Indoor.....	65
CleanShield® Commode.....	Restroom.....	Indoor.....	65
WaterHog® Forklift.....	Specialty.....	Indoor/Outdoor.....	66
WaterHog® Eco Elevator.....	Specialty.....	Indoor.....	66
Grease Hog.....	Absorbent/Slip-Resistant.....	Indoor.....	67
Melt Step®.....	Snow Melting/Slip-Resistant.....	Outdoor.....	67
<b>Environmental Commitment.....</b>			<b>68</b>
<b>About M+A Matting.....</b>			<b>69</b>

## PAGE 32

### LOGO MAT COLLECTION

## PAGE 42

### ANTI-FATIGUE & SLIP RESISTANT MAT COLLECTION

## PAGE 63

### SPECIALTY MATTING COLLECTION

## Mat Symbols



### Scraper

Scraper mats are heavy-duty mats designed to stop mud and larger particles of dirt from being tracked inside buildings.



### Scraper/Wiper

Scraper/Wiper mats provide scraping action and wiping to further stop dirt and moisture from entering a facility. These mats are typically made of tough heavy-duty commercial fabrics. They retain dust in recessed grooves while absorbing moisture in the fabric surface.



### Carpeted (Wiper)

Wiper mats are designed to stop any remaining dust and moisture. These mats are made with a variety of carpeted surfaces and colors to compliment a wide range of interiors.



### Anti-Fatigue

Ergonomic mats and floor tiles reduce fatigue by up to 50%. Anti-fatigue mats help increase blood circulation and reduce pressure on the body's musculoskeletal system. They also reduce foot arch pronation, varicose veins, and pain commonly attributed to standing for long periods of time.



### Anti-Slip

Uniquely designed texturized surfaces prevent slip and fall accidents. Heavy-duty rubber keeps the mats in place and prevents movement on a variety of surfaces.



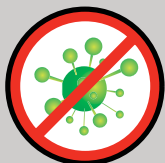
### Damp Areas

May be used in areas where moisture is present.



### Wet Areas

Recommended for use in wet areas. While other mats may be suitable for use in wet areas, mats with the wet icon are the best choice for wet areas. These mats are designed to provide traction even in very wet conditions.



### Anti-Microbial

Matting permanently treated with an anti-microbial agent that guards against degradation from micro-organisms and minimizes mats being a source of odors.

## Mat Symbols



### Chemical Resistant

Many M+A Matting mats are manufactured with nitrile rubber which is resistant to most commonly used chemicals.



### Oily Environment

Nitrile rubber mats withstand degradation from oils and grease. These mats are suitable for use in environments with industrial oils, machine lubricants, greases, food grade oils, etc.



### Safety

Matting and tiles with highly visible, colored borders and beveled edges reduce trips and falls.



### Welding Safe

Matting that is suitable for use in locations of high temperatures and welding slag. The temperature resistant rubber can withstand temperatures up to 1742 degrees Fahrenheit from welding slag and hot metal shavings.



### ESD

Matting that dissipates static electricity from people to protect sensitive equipment and small static generated electric shocks.



### Cart Traffic

Matting and tiles designed to withstand heavy cart traffic.



### Recycled Content

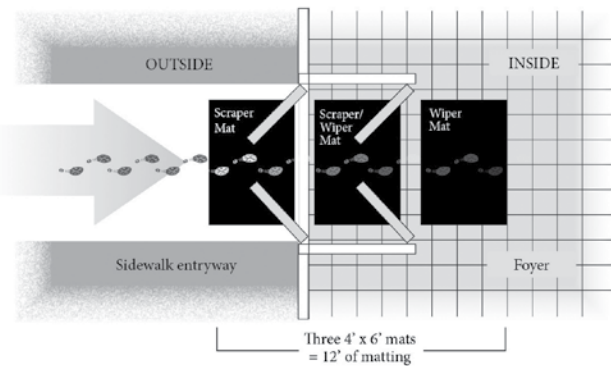
Contains recycled content.

## Preventative Maintenance

**Mats are the first defense to stop dirt and moisture from entering your building.** Mats filter these contaminants from entering the facility, saving thousands of dollars a year in cleaning costs. Mats also protect interior floor surfaces from excessive damage and wear. Entrance mats are the most effective way of stopping dirt and moisture at the door and keeping building maintenance costs to a minimum.

### Consider These Facts...

- 70% to 80% of dust, grime, and dirt in a building is tracked in from the outside on people's feet—permanently damaging floors.
- One square yard of carpet can accumulate one pound of dirt a week—twice that in inclement weather.
- It is estimated that the cost to find and remove a single pound of dirt from a building can run in excess of \$600 in cleaning costs. As few as 150 people entering a facility can track in one pound of dirt in a 5 day work week costing over \$30,000 dollars annually to remove.
- By utilizing high performance entrance matting of at least 15' to 18' (as recommend by the U.S. Green Building Council and the Carpet and Rug Institute) you can capture as much as 85% to 95% of contaminants that enter the building, saving maintenance dollars and protecting building assets.



## Safety and Ergonomics

Mats are used throughout facilities in numerous other capacities where safety is a must and anti-fatigue comfort is essential to the health and well being of employees.

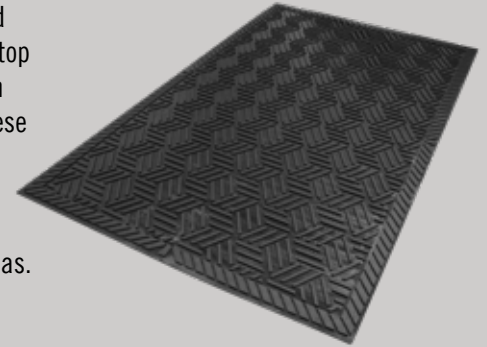
- Slip and falls are the second leading cause of all workplace injuries according to Liberty Mutual Workplace Index. As many as 25,000 people a day are victims of slip and fall accidents (NSC).
- Compensation and medical costs associated with employee slip-and-fall accidents total approximately \$70 billion annually (NSC).
- The average cost of a slip-and-fall injury exceeds \$12,000 (Wausau Insurance).
- The average cost to defend a slip-and-fall lawsuit is \$50,000 (NFSI).
- Back injuries account for 25% of all worker compensation claims annually.
- Cumulative Standing Trauma (CST) causes billions of dollars of loss annually due to reduced productivity, increased worker compensation, higher insurance rates and absenteeism.
- According to the American College of Occupational and Environmental Science, about 38% of workers in the United States suffer from fatigue.

# M+A Matting has

## Scraper Mats

### The First Line of Defense

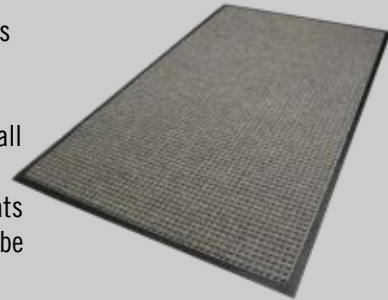
Scraper mats are designed for placement outside to stop mud and large debris from entering your building. These mats provide aggressive scraping action to remove dirt and debris from shoes and trap it in recessed areas.



## WaterHog (Scraper/Wiper) Mats

### The Second Step to Keeping Floors Clean & Dry

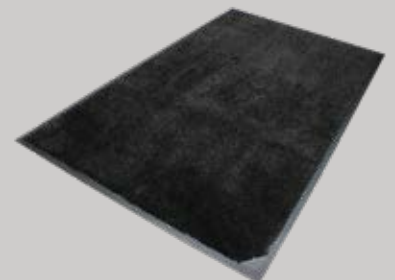
WaterHog mats feature a unique bi-level design that scrapes dirt and wipes moisture from shoes. These mats are made with durable fibers that quickly dissipate water, while dirt and debris fall to the bottom of the mat, beneath shoe level, to prevent tracking. WaterHog mats are typically used inside, but they may be used outside as well.



## Carpeted (Wiper) Mats

### The Third Step Against Dirt & Moisture

As entrance mats, carpeted mats are designed to remove any remaining dirt and moisture from shoes. They also provide excellent dust control. Carpet is made in a variety of materials and colors to suite a variety of needs and blend with virtually any décor. Carpeted mats are designed for indoor use. When used in conjunction with a scraper mat and WaterHog mat, they can stop as much as 85% to 95% of dirt from entering a building.



# the right mat for every job.

## Logo Mats

Promote Your Brand

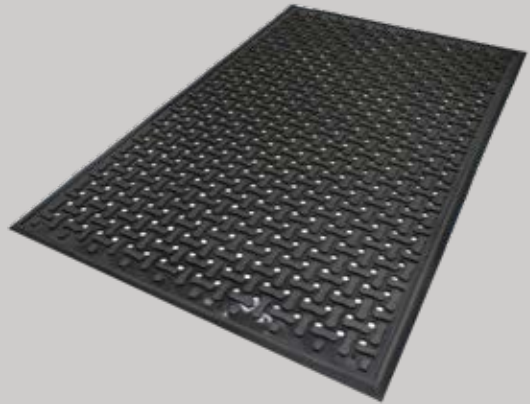
Logos, messages, and artwork add a professional look to any entrance or lobby, in addition to the cleanliness and safety benefits the mat itself provides. M+A can add your logo or custom artwork to mats of all types.



## Flow-Through Mats

Wet Area Solutions

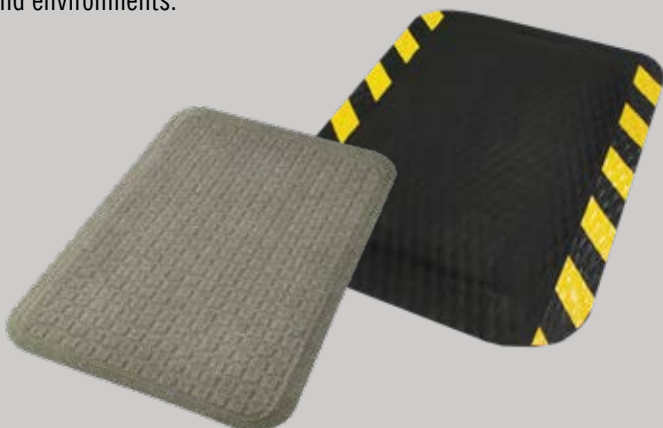
Flow-through mats are designed for wet environments. The surface offers extra traction while the holes allow liquid to pass through to help eliminate slipping hazards. Flow-through mats also provide excellent anti-fatigue benefits for workers who stand for long periods of time.



## Anti-Fatigue Mats

Provide Comfort & Safety

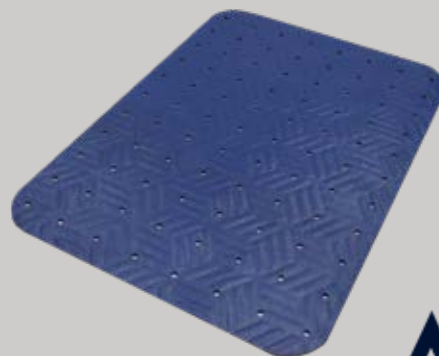
Standing for long periods of time restricts blood flow to the lower extremities, causing soreness and fatigue. Anti-fatigue mats provide support to muscles in the lower legs and back and promote subtle movement in the leg and calf muscles which results in increased blood and oxygen flow. Anti-fatigue mats are available in a wide array of thicknesses and materials to suite a variety of workspaces and environments.



## Slip-Resistant Mats

Protect Against Slips and Falls

With slip-and-fall accidents comprising the majority of worker's compensation claims and a large share of unintended injuries in general, it's more important than ever to ensure that surfaces are as slip resistant as possible. Slip-resistant mats are an ideal solution for providing traction in slippery areas.





# Mat Entry System

Stop dirt and moisture at your door







## ENTRANCE MATTING

### Scraper

SuperScrape™  
SuperScrape Plus®  
Flex Tip™  
Frontier  
Brush Hog™

### WaterHog

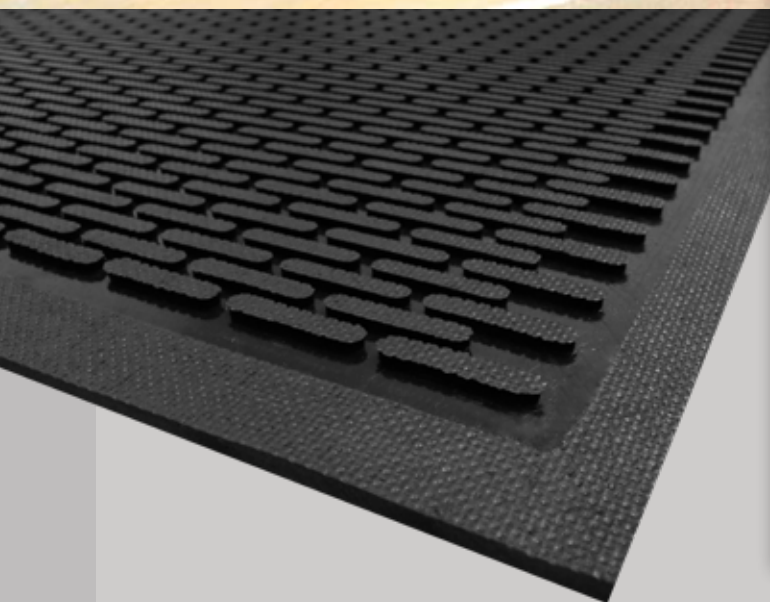
WaterHog®  
WaterHog® Diamond  
WaterHog® Legacy  
WaterHog® Grand  
WaterHog® Modular Tiles  
WaterHog® Tiles  
WaterHog® Eco Tiles  
WaterHog® Eco Premier  
WaterHog® Eco Elite  
WaterHog® Eco Legacy  
WaterHog® Eco Grand  
WaterHog® Eco Elite Roll Goods  
WaterHog® Plus  
WaterHog® Diamondcord  
WaterHog® Masterpiece® Select  
WaterHog® Low Profile

### Carpeted

Berber Roll Goods  
MicroLux™  
Plush™  
ColorStar®  
Enviro Plus®  
Stylist  
Impressionist  
Cobblestone™  
Victory

3  
Carpeted (Wiper)

**Did you know:** 85% of dirt, dust, and moisture brought into a building can be contained within the first 15 to 18 feet with mats (ISSA).



## SUPERSCAPE™

Scraper • Slip-Resistant

3/16" Product No. 555 & 5555

- **Clean** – Surface cleats effectively remove and trap dirt and sand below shoe level to prevent tracking
- **Safe** – Slip resistant even in wet environments; certified high-traction by the National Floor Safety Institute (NFSI)
- **Suitable for Harsh Environments** – Grease/oil proof; chemical resistant
- **Easy to Clean** – Lightweight flexible design ensures easy handling and cleaning (shake off soil and hose off); can be commercially laundered or autoclave sterilized
- 3/16" thick nitrile rubber

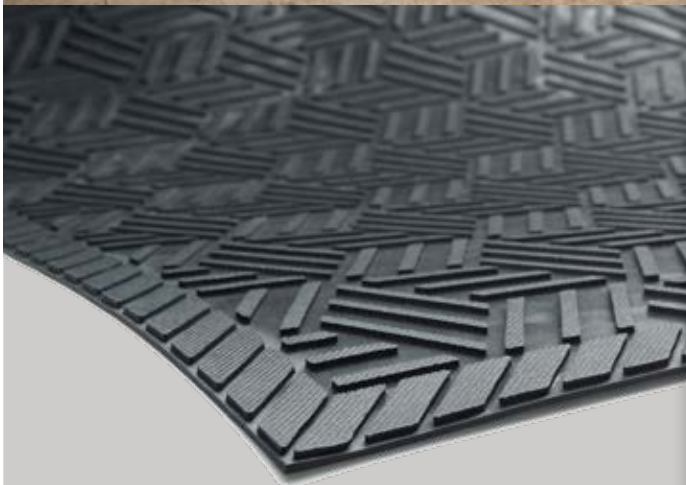
### SIZES

2'5" x 3'  
 3' x 5'  
 3' x 10'  
 4' x 6'  
 4' x 8'  
 6' x 6'  
 6' x 8'

Sizes are approximate.



Indoor or Outdoor



## SUPERSCAPE PLUS®

Scraper • Slip-Resistant

3/16" Product No. 5558

- **Clean** – Multi-directional surface cleats effectively remove and trap dirt and sand below shoe level to prevent tracking; drainable borders filter water off mat
- **Safe** – Certified high-traction by the National Floor Safety Institute (NFSI)
- **Suitable for Harsh Environments** – Grease/oil proof; chemical resistant
- **Easy to Clean** – Lightweight flexible design ensures easy handling and cleaning (shake off soil and hose off); can be commercially laundered or autoclave sterilized
- 3/16" thick nitrile rubber construction

### SIZES

2'6" x 3'  
3' x 5'  
3' x 10'  
4' x 6'

Sizes are approximate.



Indoor or Outdoor

100%  
customer satisfaction  
GUARANTEED

NFSI  
HIGH-TRACTION

MADE  
IN THE  
USA

**FLEX TIP™**  
Scrapper · Slip-Resistant



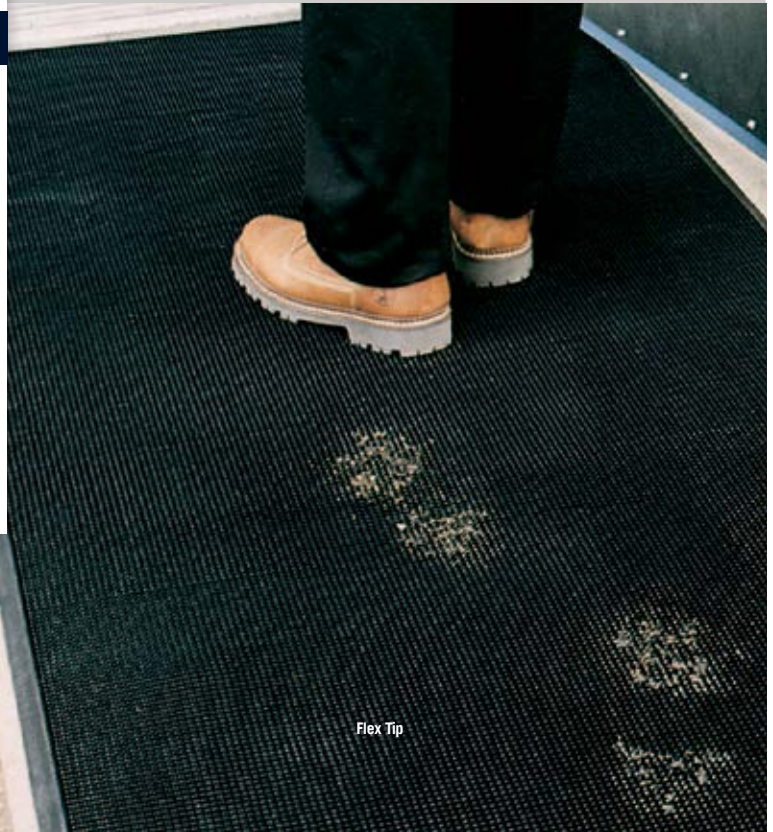
Outdoor

5/8" Product No. 874

- **Clean** - 2,000 finger-like tips per square foot effectively remove dirt while deep wells hold it to minimize tracking
- **Safe** - OSHA-compliant beveled edges ensure a safe transition from floor to mat
- **Comfortable** - Finger-like tips provide excellent anti-fatigue qualities
- **Easy to Clean** - Flexible design ensures easy handling and cleaning (shake off soil and hose off)
- 5/8" thick natural rubber construction makes this a substantial mat that is unlikely to move, even with heavy winds

**SIZES**

- 24" x 32"
- 32" x 39"
- 36" x 72"



Indoor or Outdoor



**FRONTIER**

Scrapper · Slip-Resistant

3/8" Product No. 437

- Spaghetti-like design filters dirt and moisture away from the surface
- Available with edging (sold separately)

**SIZES**

- 2' x 3' 4' x 8'
- 3' x 5' 3' x 60'
- 3' x 10' 4' x 60'
- 4' x 6'

Sizes are approximate. Additional lengths up to 60' in 3' and 4' widths



With Edging

Without Edging



Burgundy

## BRUSH HOG™

Scraper · Slip-Resistant

3/8" Product No. 395



Outdoor

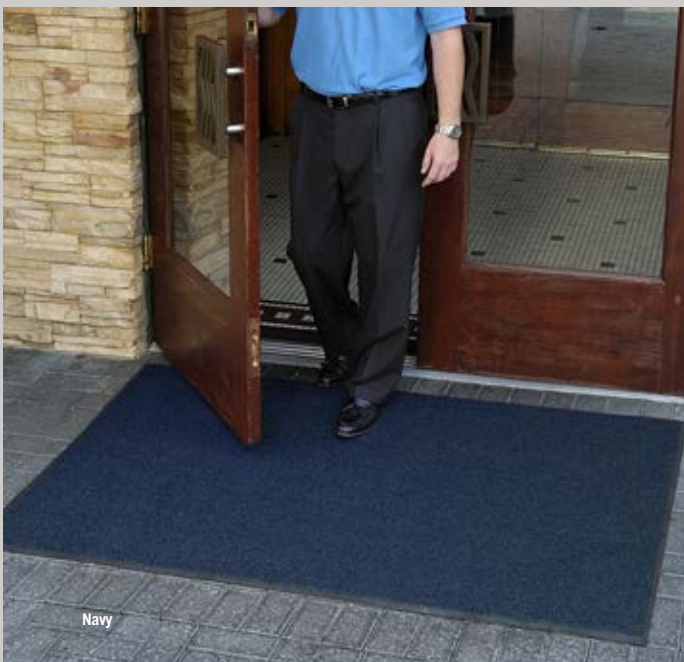
- **Clean** - The turf-pile construction aggressively scrapes dirt from shoes and filters moisture and dirt away from the mat surface
- **Fade Resistant** - Solution-dyed nylon will not fade in sunlight
- **Safe** - Certified high-traction by the National Floor Safety Institute (NFSI)
- Comes standard with 78-mil smooth SBR backing, but is available with 78-mil universal cleated SBR backing

### SIZES

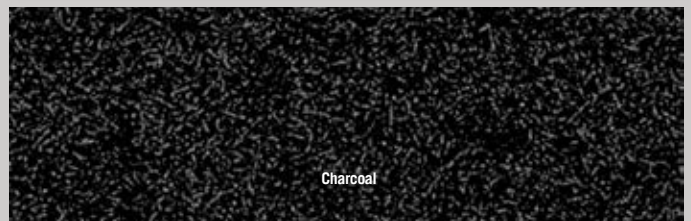
2' x 3'	4' x 8'
3' x 4'	4' x 10'
3' x 5'	4' x 12'
3' x 6'	4' x 16'
3' x 8'	4' x 20'
3' x 10'	6' x 8'
3' x 12'	6' x 12'
3' x 16'	6' x 16'
3' x 20'	6' x 20'
4' x 6'	

Additional lengths up to 60'. See price list for all additional sizes.

Sizes are approximate.



Navy



Charcoal



Brown

Burgundy

Charcoal

Green

Navy



# The Wonderful World of

Since its introduction in 1986, the WaterHog has become American's best-selling mat. Renowned for its bi-level design and water dam border, it's highly effective at stopping dirt and moisture, keeping floors clean and dry.

The WaterHog product line has grown substantially over the last three decades to include a wide array of patterns, colors, and sizes. With so many options and a unique nomenclature, selecting a WaterHog mat can seem challenging at first, but these steps are designed to simplify the selection process.

## 1. Pick Your Fabric Weight

### WaterHog®



24-ounce PET

### WaterHog® Eco



30-ounce PET

Both the 24-ounce *WaterHog* and 30-ounce *WaterHog Eco* product lines are made with PET, an eco-friendly polyester made from 100% post-consumer recycled plastic bottles.

## 2. Pick Your Pattern and Color

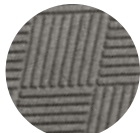
The *WaterHog* (24-ounce) line comes in three designs with 19 color options. The *WaterHog Eco* (30-ounce) line comes in four designs with 8 color options.

WaterHog  
(the original)



Waffle

WaterHog  
Diamond



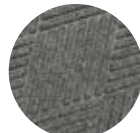
Diamond

WaterHog  
Legacy



Hexagon

WaterHog  
Eco Premier



Diamond

WaterHog  
Eco Elite



Herringbone

WaterHog  
Eco Legacy



Hexagon

WaterHog  
Plus



Swirl



# WaterHog® Mats



## 3. Pick Your Border



**Classic Rubber Border**

**Fashion Fabric Border**

## 4. Pick Your Backing

All WaterHog mats are backed with rubber. The standard backing is a 78-mil SBR (styrene-butadiene rubber) with either a smooth surface for placement on smooth/hard floors (like marble, tile, or wood) or with a universal cleated surface for placement on carpeted floors. Select WaterHog mats with a classic border are available with Anchor Safe® backing, a 100-mil nitrile backing with heavy cleats to ensure the mats stays in place, even with heavy traffic.



**Smooth Backing**  
78-mil SBR

Recommended for hard floor surfaces



**Universal Cleated Backing**  
78-mil SBR

Recommended for carpeted floors



**Anchor Safe® Backing**  
100-mil nitrile

Recommended for hard floor surfaces with heavy traffic or cart use

## 5. Add Some Optional “Grandeur”

If you're interested in adding a little grandeur to your entrance matting, you may want to consider a *WaterHog Grand* or *WaterHog Eco Grand* mat. The luxurious rounded mats can be placed at either or both ends of:

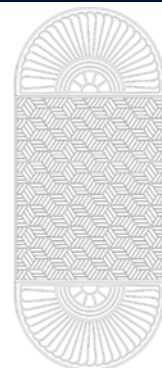
- » WaterHog Diamond
- » WaterHog Legacy
- » WaterHog Eco Elite
- » WaterHog Eco Legacy
- » WaterHog Eco Premier



Half Oval



One End



Two Ends



WaterHog  
Fashion Border  
Evergreen



WaterHog  
Classic Border  
Bordeaux

## WATERHOG®

Scraper/Wiper • Slip-Resistant

3/8" Classic Border Product No. 200  
3/8" Fashion Border Product No. 280



Indoor or Outdoor

WaterHog Classic

WaterHog Fashion



Rubber reinforced textile Rubber border

Rubber reinforced textile Fabric border



## WATERHOG® DRAINABLE

3/8" Product No. 250



This borderless WaterHog mat allows water to freely drain away

- **Clean & Dry** – Bi-level surface effectively scrapes dirt and moisture from shoes, trapping it beneath shoe level to prevent tracking; water dam border holds moisture keeping it off your floors (WaterHog mats can hold up to 1.5 gallons of water per square yard)
- **Durable** – Reinforced rubber nubs prevent pile from crushing and extend the performance life of the mat
- **Fade & Stain Resistant** – Solution-dyed fabric is resistant to staining, dries quickly, and will not fade or rot
- **Safe** – Beveled edges provide a safe transition from floor to mat; certified high-traction by the National Floor Safety Institute (NFSI)
- **Eco-Friendly** – Rubber backing contains 20% post-consumer recycled rubber from car tires; PET surface fabric is made from 100% post-consumer recycled plastic bottles
- Available in 19 colors with choice of classic rubber border or fashion fabric border
- Feature 78-mil SBR rubber with universal cleated backing or smooth backing; available with optional Anchor Safe® nitrile rubber backing on classic border mat only

### SIZES

18" x 27" 4' x 8'  
2' x 3' 4' x 10'  
3' x 4' 4' x 12'  
3' x 5' 4' x 16'  
3' x 8' 4' x 20'  
3' x 10' 6' x 8'  
3' x 12' 6' x 12'  
3' x 16' 6' x 16'  
3' x 20' 6' x 20'  
4' x 6'

See price list for additional size options. Mats up to 40' are available with universal cleated or smooth backing. Mats over 40' are only available with smooth backing. Anchor Safe backing is available upon request on mats up to 20'. Anchor Safe backing features 100 mil nitrile rubber and is a 30% upcharge.

Sizes are approximate.



Aquamarine\* Bluestone Bordeaux Camel Charcoal Dark Brown Evergreen Gold\* Light Green\* Medium Blue  
Medium Brown Medium Grey Navy Orange\* Purple\* Red/Black Solid Red\* White\* Yellow\*

\*These colors are ONLY available in 3' and 4' widths.





WaterHog Diamond  
Classic Border  
Red/Black

## WATERHOG® DIAMOND

Scraper/Wiper · Slip-Resistant

3/8" Classic Border Product No. 208  
3/8" Fashion Border Product No. 221



Indoor or Outdoor



WaterHog Diamond  
Classic Border  
Navy

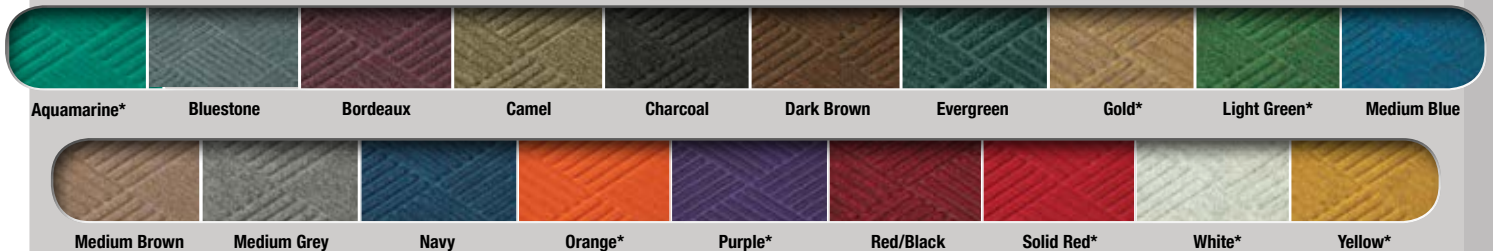
- **Clean & Dry** – Bi-level surface effectively scrapes dirt and moisture from shoes, trapping it beneath shoe level to prevent tracking; water dam border holds moisture keeping it off your floors (WaterHog mats can hold up to 1.5 gallons of water per square yard)
- **Durable** – Reinforced rubber nubs prevent pile from crushing and extend the performance life of the mat
- **Fade & Stain Resistant** – Solution-dyed fabric is resistant to staining, dries quickly, and will not fade or rot
- **Safe** – Beveled edges provide a safe transition from floor to mat; certified high-traction by the National Floor Safety Institute (NFSI)
- **Eco-Friendly** – Rubber backing contains 20% post-consumer recycled rubber from car tires; PET surface fabric is made from 100% post-consumer recycled plastic bottles
- Available in 19 colors with choice of classic rubber border or fashion fabric border
- Feature 78-mil SBR rubber with universal cleated backing or smooth backing; available with optional Anchor Safe® nitrile rubber backing on classic border mat only

### SIZES

2' x 3'	4' x 8.4'
3' x 4'	4' x 10'
3' x 5'	4' x 12.2'
3' x 6'	4' x 16'
3' x 8.4'	4' x 20'
3' x 10'	6' x 6'
3' x 12.2'	6' x 8.4'
3' x 16'	6' x 12.2'
3' x 20'	6' x 16'
4' x 6'	6' x 20'

See price list for additional size options. Mats up to 40' are available with universal cleated or smooth backing. Mats over 40' are only available with smooth backing. Anchor Safe backing is available upon request on mats up to 20'. Anchor Safe backing features 100 mil nitrile rubber and is a 30% upcharge.

Sizes are approximate.



\*These colors are ONLY available in 3' and 4' widths.



Fashion Border  
Red/Black

## WATERHOG® LEGACY

Scraper/Wiper • Slip-Resistant

3/8" Classic Border Product No. 201

3/8" Fashion Border Product No. 202

- **Clean & Dry** - Bi-level surface effectively scrapes dirt and moisture from shoes, trapping it beneath shoe level to prevent tracking; water dam border holds moisture keeping it off your floors (WaterHog mats can hold up to 1.5 gallons of water per square yard)
- **Durable** - Reinforced rubber nubs prevent pile from crushing and extend the performance life of the mat
- **Fade & Stain-Resistant** - Solution-dyed PET fabric (24 ounces/yard<sup>2</sup>) is resistant to staining, dries quickly, and will not fade or rot
- **Safe** - Beveled edges provide a safe transition from floor to mat; certified high-traction by the National Floor Safety Institute (NFSI)
- **Eco-Friendly** - SBR rubber backing contains 20% post-consumer recycled rubber from car tires; PET surface is made from 100% post-consumer recycled plastic bottles
- Available in 19 colors with choice of classic rubber border or fashion fabric border
- Feature 78-mil SBR rubber with universal cleated backing or smooth backing; available with optional Anchor Safe® nitrile rubber backing on classic border mat only

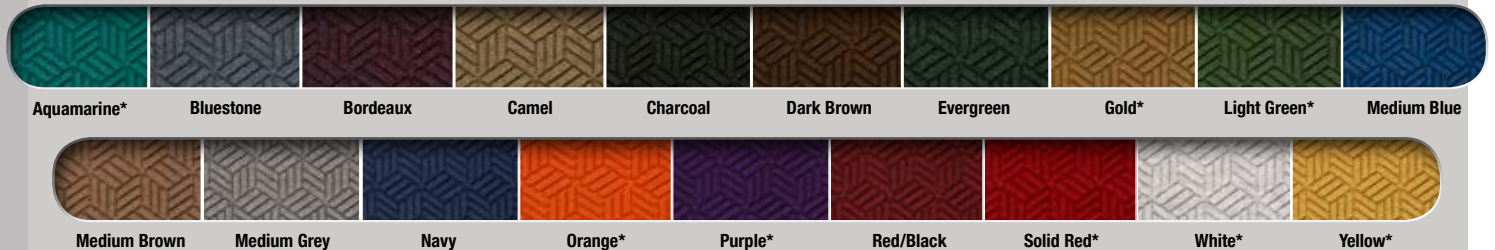
### SIZES

2' x 3'  
3' x 4'  
3' x 5'  
3' x 8'  
3' x 10'  
3' x 12'  
3' x 16'  
3' x 20'  
4' x 4'  
4' x 6'  
4' x 8'  
4' x 10'  
4' x 12'  
4' x 16'  
4' x 20'  
6' x 6'  
6' x 8'  
6' x 10'  
6' x 12'  
6' x 16'  
6' x 20'

Sizes are approximate. Additional lengths up to 61'.



Indoor or Outdoor



\*These colors are ONLY available in 3' and 4' widths.



WaterHog Grand  
Legacy + Two Ends  
Aquamarine



WaterHog Grand  
Diamond + One End  
Medium Grey



WaterHog Grand  
Half Oval  
Bordeaux

## WATERHOG® GRAND

Scraper/Wiper • Slip-Resistant

3/8"	Diamond Half Oval: 272	Legacy Half Oval: 275
3/8"	Diamond + One End: 273	Legacy + One End: 274
3/8"	Diamond + Two Ends: 274	Legacy + Two Ends: 277

WaterHog Grand mats feature a beautiful half oval mat that can be placed at either or both ends of the standard WaterHog Diamond or WaterHog Legacy mat to create an attractive and "grand" entrance to your facility.



Indoor or Outdoor

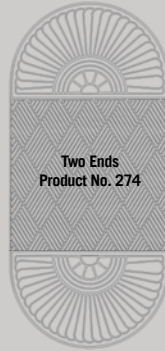
WaterHog Diamond



Half Oval  
Product No. 272



One End  
Product No. 273

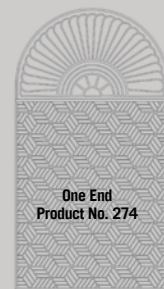


Two Ends  
Product No. 274

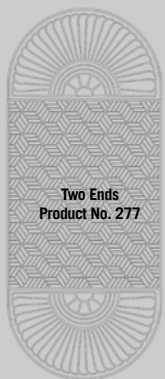
WaterHog Legacy



Half Oval  
Product No. 275



One End  
Product No. 274



Two Ends  
Product No. 277

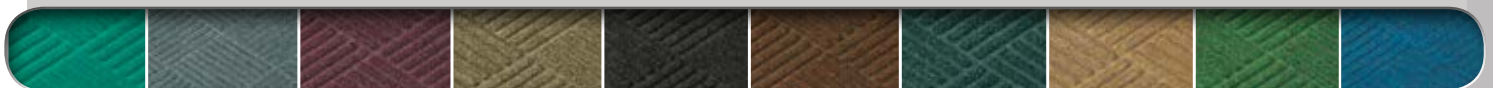
- **Clean & Dry** – Bi-level surface effectively scrapes dirt and moisture from shoes, trapping it beneath shoe level to prevent tracking; water dam border holds moisture keeping it off your floors (WaterHog mats can hold up to 1.5 gallons of water per square yard)
- **Durable** – Reinforced rubber nubs prevent pile from crushing and extend the performance life of the mat
- **Fade & Stain Resistant** - Solution-dyed fabric is resistant to staining, dries quickly, and will not fade or rot
- **Safe** – Beveled edges provide a safe transition from floor to mat; certified high-traction by the National Floor Safety Institute (NFSI)
- **Eco-Friendly** – Rubber backing contains 20% post-consumer recycled rubber from car tires
- Available in 19 colors with 78-mil SBR rubber with universal cleated backing or smooth backing

### SIZES

HALF OVAL	TWO ENDS
3' x 1.8'	3' x 7'
4' x 2.3'	3' x 11.7'
6' x 3.3'	3' x 15.5'
	3' x 19.4'
ONE END	3' x 23.2'
3' x 5.5'	4' x 8'
3' x 10'	4' x 12.6'
3' x 13.9'	4' x 16.5'
3' x 17.7'	4' x 20.3'
3' x 21.6'	6' x 10.1'
4' x 5.9'	6' x 14.8'
4' x 10.5'	6' x 18.6'
4' x 14.4'	6' x 22.4'
4' x 18.2'	
4' x 22'	
6' x 7'	
6' x 11.6'	
6' x 15.4'	
6' x 19.3'	
6' x 23.1'	

See price list for additional size options. Mats up to 40' are available with universal cleated or smooth backing. Mats over 40' are only available with smooth backing.

Sizes are approximate.



Aquamarine\* Bluestone Bordeaux Camel Charcoal Dark Brown Evergreen Gold\* Light Green\* Medium Blue



Medium Brown Medium Grey Navy Orange\* Purple\* Red/Black Solid Red\* White\* Yellow\*

\*These colors are ONLY available in 3' and 4' widths.



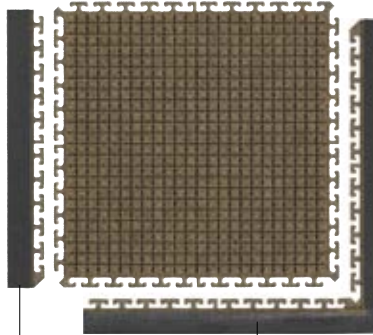


## WATERHOG® MODULAR TILE

Scraper/Wiper · Slip-Resistant

7/16" Product No. 2210

- **Clean & Dry** - Bi-level surface effectively scrapes dirt and moisture from shoes, trapping it beneath shoe level to prevent tracking
- **Durable** - Reinforced rubber nubs prevent pile from crushing and extend the performance life of the mat
- **Fade & Stain-Resistant** - Solution-dyed fabric (24 ounces/square yard) is resistant to staining, dries quickly, and will not fade or rot
- **Easy to Install** - Tiles link together easily and are designed to be installed without glue or the need for professional installers
- Tiles are 7/16" thick and available in 18" or 36" tiles with 13 color options
- Feature 200-mil SBR cleated rubber backing
- Side and corner borders (sold separately) securely link to the outer perimeter of the installation



side border

corner border

### SIZES

18" x 18" x 7/16"	36" x 36" x 7/16"
18" Side Border	36" Side Border
18" Corner Border	36" Corner Border

Camel



Bluestone

Bordeaux

Camel

Charcoal

Dark Brown



Evergreen

Light Green

Medium Blue

Medium Brown

Medium Grey

Navy

Red/Black

Solid Red



Indoor or Outdoor

# WATERHOG® TILE

Scraper/Wiper · Slip-Resistant

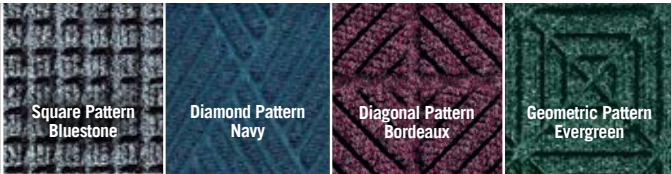


Indoor or Outdoor

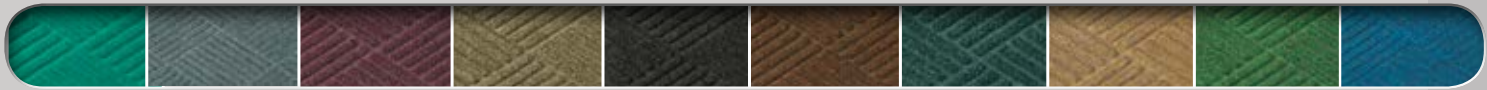
1/4" or 7/16"	Product No. 210	Square
1/4" or 7/16"	Product No. 216	Diamond
1/4" or 7/16"	Product No. 219	Diagonal
1/4" or 7/16"	Product No. 220	Geometric

- **Clean & Dry** – Bi-level surface effectively scrapes dirt and moisture from shoes, trapping it beneath shoe level to prevent tracking
- **Durable** – Reinforced rubber nubs prevent pile from crushing and extend the performance life of the mat
- **Fade & Stain Resistant** – Solution-dyed fabric is resistant to staining, dries quickly, and will not fade or rot
- **Safe** – Certified high-traction by the National Floor Safety Institute (NFSI)
- Available in 19 colors with choice of 4 patterns: waffle, diamond, diagonal, or geometric
- Available with choice of 100-mil or 200-mil SBR cleated rubber backing

**SIZE**  
18" x 18"



WaterHog Tile  
Geometric Pattern  
Dark Brown



Aquamarine Bluestone Bordeaux Camel Charcoal Dark Brown Evergreen Gold Light Green Medium Blue



Medium Brown Medium Grey Navy Orange Purple Red/Black Solid Red White Yellow



Indoor or Outdoor

# WATERHOG® ECO TILE

Scraper/Wiper · Slip-Resistant

1/4" or 7/16"	Product No. 2215	Geometric
1/4" or 7/16"	Product No. 2217	Diagonal
1/4" or 7/16"	Product No. 2218	Diamond

- **Clean & Dry** – Bi-level surface effectively scrapes dirt and moisture from shoes, trapping it beneath shoe level to prevent tracking
- **Durable** – Reinforced rubber nubs prevent pile from crushing and extend the performance life of the tiles
- **Fade & Stain Resistant** – Solution-dyed PET fabric is resistant to staining, dries quickly, and will not fade or rot
- **Safe** – Certified high-traction by the National Floor Safety Institute (NFSI)
- **Eco-Friendly** – PET fabric is made from 100% post-consumer recycled plastic from drink bottles, and SBR rubber backing contains 20% recycled rubber from car tires
- Available in 8 colors with choice of 3 patterns: diamond, diagonal, or geometric

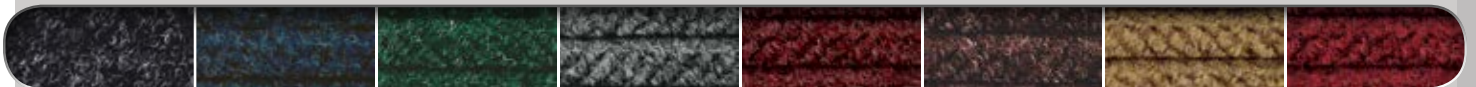
**SIZE**  
18" x 18"



WaterHog Eco Tile  
Diamond Pattern  
Regal Red



Geometric Pattern Diagonal Pattern Diamond Pattern



Black Smoke Indigo Southern Pine Grey Ash Maroon Chestnut Brown Khaki Regal Red

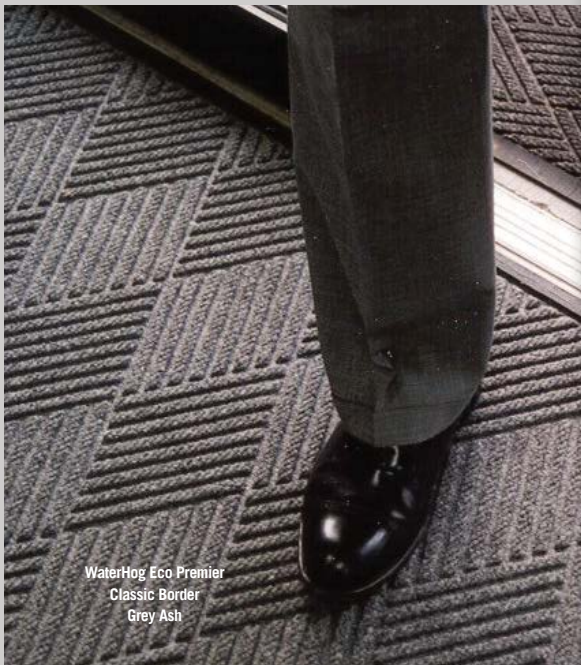




WaterHog Eco Premier  
Classic Border  
Charcoal

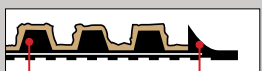


Indoor or Outdoor



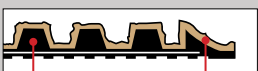
WaterHog Eco Premier  
Classic Border  
Grey Ash

Classic Rubber Border



Rubber reinforced textile Rubber border

Fashion Fabric Border



Rubber reinforced textile Fabric Border

## WATERHOG® ECO PREMIER

Scraper/Wiper · Slip-Resistant

3/8" Classic Border Product No. 2295  
3/8" Fashion Border Product No. 2297

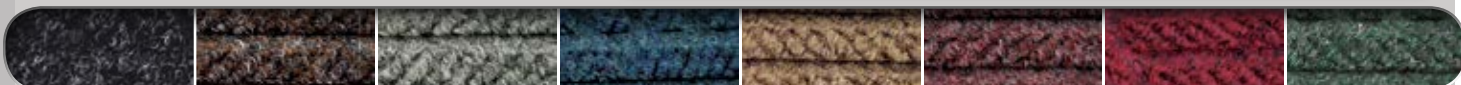
- **Clean & Dry** - Raised nubs remove dirt and moisture from shoes and trap it below foot level; water dam border holds up to 1.5 gallons of water per square yard, keeping your floors clean, dry, and safe
- **Eco-Friendly** - PET fabric is made from 100% post-consumer recycled plastic from drink bottles, and SBR rubber backing contains 20% recycled rubber from car tires
- **Safe** - Beveled edges provide a safe transition from floor to mat; certified high-traction by the National Floor Safety Institute (NFSI)
- **Durable** - Reinforced rubber nubs prevent pile from crushing and extend the performance life of the mat
- **Fade & Stain Resistant** - Solution-dyed PET fabric is resistant to staining, dries quickly, and will not fade or rot
- Available in 8 colors with choice of classic rubber border or fashion fabric border
- Feature 78-mil SBR rubber with universal cleated backing or smooth backing; available with optional Anchor Safe® nitrile rubber backing on classic border mat only

### SIZES

2' x 3'	4' x 8.4'
3' x 4'	4' x 10'
3' x 5'	4' x 12.2'
3' x 6'	4' x 16'
3' x 8.4'	4' x 20'
3' x 10'	6' x 6'
3' x 12.2'	6' x 8.4'
3' x 16'	6' x 12.2'
3' x 20'	6' x 16'
4' x 6'	6' x 20'

See price list for additional size options. Mats up to 40' are available with universal cleated or smooth backing. Mats over 40' are only available with smooth backing. Anchor Safe backing is available upon request on mats up to 20'. Anchor Safe backing features 100 mil nitrile rubber and is a 30% upcharge.

Sizes are approximate.



Black Smoke

Chestnut Brown

Grey Ash

Indigo

Khaki

Maroon

Regal Red

Southern Pine





Classic Border  
Maroon

## WATERHOG® ECO ELITE

Scraper/Wiper · Slip-Resistant

3/8" Classic Border Product No. 2240  
3/8" Fashion Border Product No. 2241

- **Clean & Dry** - Raised nubs remove dirt and moisture from shoes and trap it below foot level; water dam border holds up to 1.5 gallons of water per square yard, keeping your floors clean, dry, and safe
- **Eco-Friendly** - PET fabric is made from 100% post-consumer recycled plastic from drink bottles, and SBR rubber backing contains 20% recycled rubber from car tires
- **Safe** - Beveled edges provide a safe transition from floor to mat; certified high-traction by the National Floor Safety Institute (NFSI)
- **Durable** - Reinforced rubber nubs prevent pile from crushing and extend the performance life of the mat
- **Fade & Stain Resistant** - Solution-dyed PET fabric is resistant to staining, dries quickly, and will not fade or rot
- Available in 8 colors with choice of classic rubber border or fashion fabric border
- Feature 78-mil SBR rubber with universal cleated backing or smooth backing; available with optional Anchor Safe® nitrile rubber backing on classic border mat only

### SIZES

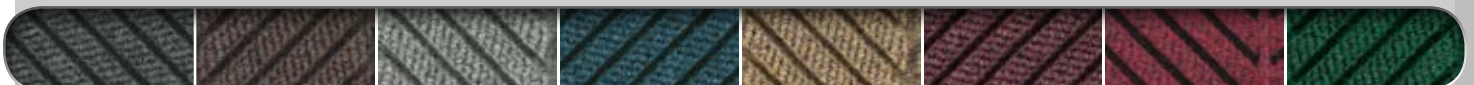
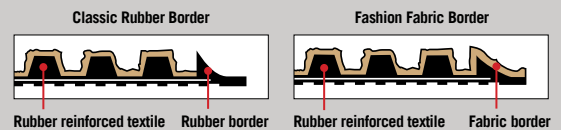
2' x 3'	4' x 10'
3' x 4'	4' x 12.2'
3' x 5'	4' x 16'
3' x 6'	4' x 20'
3' x 8.4'	6' x 6'
3' x 10'	6' x 8.4'
3' x 12.2'	6' x 12.2'
3' x 16'	6' x 16'
3' x 20'	6' x 20'
4' x 6'	
4' x 8.4'	

See price list for additional size options. Mats up to 40' are available with universal cleated or smooth backing. Mats over 40' are only available with smooth backing. Anchor Safe backing is available upon request on mats up to 20'. Anchor Safe backing features 100 mil nitrile rubber and is a 30% upcharge.

Sizes are approximate.



Indoor or Outdoor



Black Smoke

Chestnut Brown

Grey Ash

Indigo

Khaki

Maroon

Regal Red

Southern Pine



Fashion Border  
Maroon



Indoor or Outdoor

## WATERHOG® ECO LEGACY

Scraper/Wiper · Slip-Resistant

3/8" Classic Border Product No. 2290  
3/8" Fashion Border Product No. 2291



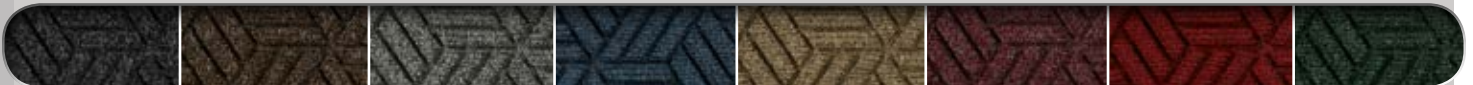
Classic Border  
Black Smoke

- **Clean & Dry** - Raised nubs remove dirt and moisture from shoes and trap it below foot level; water dam border holds up to 1.5 gallons of water per square yard, keeping your floors clean, dry, and safe
- **Eco-Friendly** - PET fabric is made from 100% post-consumer recycled plastic from drink bottles, and SBR rubber backing contains 20% recycled rubber from car tires
- **Safe** - Beveled edges provide a safe transition from floor to mat; certified high-traction by the National Floor Safety Institute (NFSI)
- **Durable** - Reinforced rubber nubs prevent pile from crushing and extend the performance life of the mat
- **Fade & Stain Resistant** - Solution-dyed PET fabric is resistant to staining, dries quickly, and will not fade or rot
- Available in 8 colors with choice of classic rubber border or fashion fabric border
- Feature 78-mil SBR rubber with universal cleated backing or smooth backing; available with optional Anchor Safe® nitrile rubber backing on classic border mat only

### SIZES

2' x 3'  
3' x 4'  
3' x 5'  
3' x 8'  
3' x 10'  
3' x 12'  
3' x 16'  
3' x 20'  
4' x 4'  
4' x 6'  
4' x 8'  
4' x 10'  
4' x 12'  
4' x 16'  
4' x 20'  
6' x 6'  
6' x 8'  
6' x 10'  
6' x 12'  
6' x 16'  
6' x 20'

Sizes are approximate. Additional lengths up to 61'.



Black Smoke

Chestnut Brown

Grey Ash

Indigo

Khaki

Maroon

Regal Red

Southern Pine





WaterHog Eco Grand  
Elite + Two Ends  
Maroon



WaterHog Eco Grand  
Elite + One End  
Khaki

## WATERHOG® ECO GRAND

Scraper/Wiper • Slip-Resistant

3/8"	Half Oval: 2246	Half Oval: 2246
3/8"	Elite + One End: 2243	Premier + One End: 2248
3/8"	Elite + Two Ends: 2244	Premier + Two Ends: 2249

WaterHog Eco Grand mats feature a beautiful half oval mat that can be placed at either or both ends of the standard WaterHog Eco Elite or WaterHog Eco Premier mat to create an attractive and "grand" entrance to your facility.

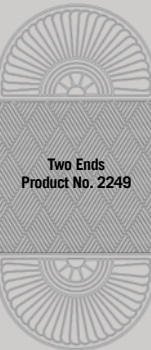


Indoor or Outdoor

WaterHog Eco Elite



WaterHog Eco Premier



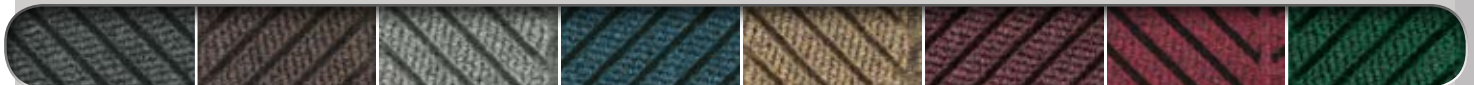
- **Clean & Dry** - Raised nubs remove dirt and moisture from shoes and trap it below foot level; water dam border holds up to 1.5 gallons of water per square yard, keeping your floors clean, dry, and safe
- **Eco-Friendly** - PET fabric is made from 100% post-consumer recycled plastic from drink bottles, and SBR rubber backing contains 20% recycled rubber from car tires
- **Safe** - Beveled edges provide a safe transition from floor to mat; certified high-traction by the National Floor Safety Institute (NFSI)
- **Durable** - Reinforced rubber nubs prevent pile from crushing and extend the performance life of the mat
- **Fade & Stain Resistant** - Solution-dyed PET fabric is resistant to staining, dries quickly, and will not fade or rot
- Available in 8 colors with 78-mil SBR rubber with universal cleated backing or smooth backing

### SIZES

HALF OVAL	TWO ENDS
3' x 1.8'	3' x 7.1'
4' x 2.3'	3' x 11.7'
6' x 3.3'	3' x 15.5'
	3' x 19.4'
ONE END	3' x 23.2'
3' x 5.5'	4' x 8'
3' x 10'	4' x 12.6'
3' x 13.9'	4' x 16.5'
3' x 17.7'	4' x 20.3'
3' x 21.6'	6' x 10.1'
4' x 5.9'	6' x 14.8'
4' x 10.5'	6' x 18.6'
4' x 14.4'	6' x 22.4'
4' x 18.2'	
4' x 22'	
6' x 7'	
6' x 11.6'	
6' x 15.4'	
6' x 19.3'	
6' x 23.1'	

See price list for additional size options. Mats up to 40' are available with universal cleated or smooth backing. Mats over 40' are only available with smooth backing.

Sizes are approximate.



Black Smoke

Chestnut Brown

Grey Ash

Indigo

Khaki

Maroon

Regal Red

Southern Pine



# WATERHOG® ECO ELITE ROLL GOODS

Scraper/Wiper · Slip-Resistant



Indoor or Outdoor

3/8" Product No. 2271\* and 2272\*\*

- **Clean & Dry** – Bi-level surface effectively scrapes dirt and moisture from shoes, trapping it beneath shoe level to prevent tracking; water dam border holds moisture keeping it off your floors (WaterHog mats can hold up to 1.5 gallons of water per square yard)
- **Durable & Fade Resistant** – Reinforced rubber nubs prevent pile from crushing and extend the performance life of the mat; solution-dyed polypropylene fabric is fade-resistant
- **Safe** – Beveled edges provide a safe transition from floor to mat; certified high-traction by the National Floor Safety Institute (NFSI)
- **Eco-Friendly** - PET fabric is made from 100% post-consumer recycled plastic from drink bottles, and SBR rubber backing contains 20% post-consumer recycled rubber from car tires
- Available in 8 colors with 78-mil smooth SBR rubber backing
- Designed to be installed like carpeting or loose-laid like a mat

## \*CUSTOM SIZES

See price list for additional information.

## \*\*ROLL SIZE

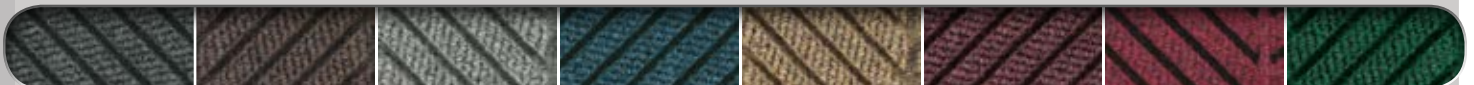
(Does not include nosing)  
6' x 67'



Maroon



Grey Ash



Black Smoke

Chestnut Brown

Grey Ash

Indigo

Khaki

Maroon

Regal Red

Southern Pine



Grey Ash

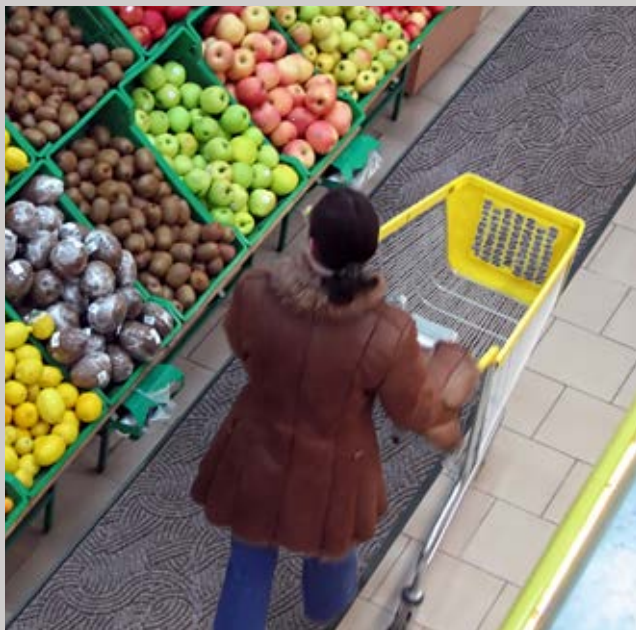


Indoor or Outdoor

## WATERHOG® PLUS

Scraper/Wiper • Slip-Resistant

3/8" Product No. 185



Southern Pine

- **Clean & Dry** - Bi-level surface effectively scrapes dirt and moisture from shoes, trapping it beneath shoe level to prevent tracking; water dam border holds moisture keeping it off your floors (WaterHog mats can hold up to 1.5 gallons of water per square yard)
- **Durable** - Reinforced rubber nubs prevent pile from crushing and extend the performance life of the mat
- **Fade & Stain-Resistant** - Solution-dyed PET fabric (30 ounces/square yard) is resistant to staining, dries quickly, and will not fade or rot
- **Eco-Friendly** - PET fabric is made from 100% post-consumer recycled plastic from drink bottles
- **Safe** - Beveled edges provide a safe transition from floor to mat; certified high-traction by the National Floor Safety Institute (NFSI)
- Available in 8 colors with a classic (rubber) border and durable 90-mil nitrile rubber backing

### SIZES

- 2' x 3'
- 3' x 4'
- 3' x 5'
- 3' x 10'
- 4' x 6'
- 4' x 8'
- 5' x 7'\*
- 5' x 10'\*
- 6' x 12'



Black Smoke

Chestnut Brown

Grey Ash

Indigo

Khaki

Maroon

Regal Red

Southern Pine





# WATERHOG® DIAMONDCORD

Scrapper/Wiper · Slip-Resistant

3/8" Product No. 296



Waterhog Diamondcord  
Brown

- **Clean & Dry** - Bi-level surface effectively scrapes dirt and moisture from shoes, trapping it beneath shoe level to prevent tracking; water dam border holds moisture keeping it off your floors (WaterHog mats can hold up to 1.5 gallons of water per square yard)
- **Durable** - Reinforced rubber nubs prevent pile from crushing and extend the performance life of the mat
- **Fade & Stain-Resistant** - Solution-dyed polypropylene fabric is resistant to staining, dries quickly, and will not fade or rot
- **Safe** - Beveled edges provide a safe transition from floor to mat; certified high-traction by the National Floor Safety Institute (NFSI)
- **Eco-Friendly** - Rubber backing contains 20% post-consumer recycled rubber from car tires
- Available in 3 colors with a classic rubber border
- Feature 78-mil SBR rubber with universal cleated backing or smooth backing; available with optional Anchor Safe® nitrile rubber backing

## SIZES

2' x 3'    4' x 6'  
 3' x 4'    4' x 8.4'  
 3' x 5'    4' x 10'  
 3' x 6'    6' x 6'  
 3' x 8.4'    6' x 8.4'  
 3' x 10'

Sizes are approximate. See price list for additional sizes. Mats up to 40' are standard Cleated backing and available in Smooth backing on request. Anchor Safe backing is available upon request on mats up to 20'. Mats over 40' are available only in Smooth backing.  
**\*Note:** Anchor Safe backing available with a 30% upcharge. This backing is .100 mil thick nitrile rubber.



Black

Brown

Grey

# WATERHOG® MASTERPIECE SELECT

Scrapper/Wiper · Slip-Resistant

3/8" Product No. 265

- **Clean & Dry** - Bi-level surface effectively scrapes dirt and moisture from shoes, trapping it beneath shoe level to prevent tracking; water dam border holds moisture keeping it off your floors (WaterHog mats can hold up to 1.5 gallons of water per square yard)
- **Durable** - Reinforced rubber nubs prevent pile from crushing and extend the performance life of the mat
- **Fade & Stain-Resistant** - Solution-dyed polypropylene fabric is resistant to staining, dries quickly, and will not fade or rot
- **Safe** - Beveled edges provide a safe transition from floor to mat; certified high-traction by the National Floor Safety Institute (NFSI)
- **Eco-Friendly** - Rubber backing contains 20% post-consumer recycled rubber from car tires
- Available in 6 colors with a classic rubber border
- Feature 78-mil SBR rubber with universal cleated backing or smooth backing; also available with optional Anchor Safe® nitrile rubber backing

## SIZES

2' x 3'    4' x 6'  
 3' x 4'    4' x 8'  
 3' x 5'    4' x 10'  
 3' x 8'    6' x 8'  
 3' x 10'

Sizes are approximate. See price list for additional sizes. Mats up to 40' are standard Cleated backing and available in Smooth backing on request. Anchor Safe backing is available upon request on mats up to 20'. Mats over 40' are available only in Smooth backing.  
**\*Note:** Anchor Safe backing available with a 30% upcharge. This backing is .100 mil thick nitrile rubber.



Mauve

Nutmeg

Ocean Wave



Pewter

Smoky Teal

Thunderstorm





WaterHog Low Profile  
Charcoal



Charcoal

Cocoa Brown

Granite



Indoor

## WATERHOG® LOW PROFILE

Scraper/Wiper • Slip-Resistant

1/4" Product No. 251

- **Clean & Dry** – Bi-level surface effectively scrapes dirt and moisture from shoes, trapping it beneath shoe level to prevent tracking
- **Durable** – Reinforced rubber nubs prevent pile from crushing and extend the performance life of the mat
- **Fade & Stain Resistant** - Solution-dyed fabric is resistant to staining, dries quickly, and will not fade or rot
- **Safe** – Low-profile borders help reduce potential tripping hazards; certified high-traction by the National Floor Safety Institute (NFSI)
- Available in 3 neutral colors to blend with virtually any décor
- Feature Anchor Safe® backing (made from durable 100-mil nitrile rubber) designed to keep mats in place

### SIZES

3' x 5'  
3' x 10'  
4' x 6'  
4' x 10'

Sizes are approximate.



Indoor or Outdoor



Berber Roll Goods  
Charcoal

## BERBER ROLL GOODS

Carpeted (Wiper) • Slip-Resistant

3/8" Roll Goods

Product No. 2281

3/8" Roll Goods, custom sizes

Product No. 2282

- **Durable** - Heavy 52-ounce solution-dyed fabric is stain resistant and has excellent light fastness; tough enough for outdoor use
- **Customizable** - In addition to being available in custom sizes, this product can be made with your custom logo inlaid (no setup fees)
- **Safe** - High-performance rubber backing helps hold the mat in place to minimize slipping hazards
- **Attractive** - Loop pile "berber" construction features a hobnail design for an upscale look
- **Easy to Clean** - Polypropylene fabric is naturally resistant to staining and fading 3/8" thick and a available in 17 colors to match any décor
- Designed to be installed like carpeting or loose-laid like a mat; available with singed borders or vinyl nosing (sold separately)

### ROLL SIZES

(Does not include nosing)  
6' x 125'  
12' x 125'

### CUSTOM SIZES

Available in 3' to 12' widths in sizes up to 12' x 50'. Widths over 6' may be seamed based on material availability. See price list for additional information. Sizes are approximate.



Bright Red

Burgundy

Charcoal\*

Dark Blue\*

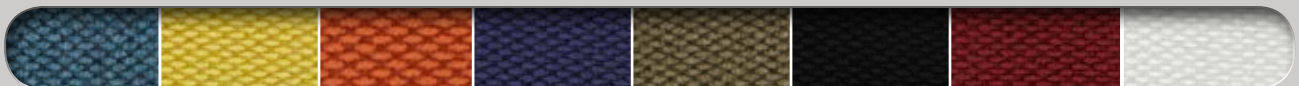
Dark Brown\*

Dark Green

Emerald Green

Gold

Grey\*



Light Blue

Light Yellow

Orange

Purple

Sand\*

Solid Black

Solid Red

White



\*Available in 12' widths without a seam upon request



## MICROLUXX™

Carpeted (Wiper)

3/8" Product No. 1201

The MicroLuxx mat features traditional nylon fibers blended with finer denier fibers that work together to absorb high levels of dirt and moisture.

- **Superior Dust & Moisture Control** - Absorbs and retains 2.5 times more moisture than standard carpeted mats
- **Fade Resistant** - Solution-dyed nylon won't fade in sunlight or with repeated washing; impervious to bleach
- **Safe** - Beveled edges provide a safe transition from mat to floor; certified high-traction by the National Floor Safety Institute
- **Durable nitrile rubber backing** (available in 52, 65, or 90 mil)

### SIZES

2' x 3'  
2.5' x 3'  
2.5' x 4'  
3' x 4'  
3' x 5'  
3' x 10'  
4' x 6'  
4' x 8'  
5' x 8'  
5' x 10'  
5' x 12'  
6' x 8'  
6' x 10'  
6' x 12'

Custom sizes up to 40'  
Sizes are approximate.



## PLUSH™

Carpeted (Wiper)

3/8" Product No. 180

- **Superior Moisture & Dust Control** - Heavier carpet pile absorbs and retains 50% more moisture and dust than standard mats
- **Resilient** - High-twist, heat-set nylon resists crushing to better trap dirt and extend the useful life of the mat
- **Fade Resistant** - Solution-dyed nylon won't fade in sunlight or with repeated washing; impervious to bleach
- **Safe** - Certified high-traction by the National Floor Safety Institute (NFSI)
- Commercially launderable
- Available in 8 color options on durable 90-mil nitrile rubber with multiple backing options (smooth, cleated, or suction) to ensure the mat stays in place on your floor

### SIZES

2' x 3'  
3' x 4'  
3' x 10'  
4' x 6'  
4' x 8'

See price list for all additional sizes  
Sizes are approximate.



Black

Brown/Black

Dark Green

Deeper Navy

Golden Brown

Midnight Grey

Red Pepper

Slate Grey



Indoor

## COLORSTAR®

Carpeted (Wiper)

3/8" Product No. 100

- **Eco-Friendly** – ColorStar mats are made with PET (polyethylene terephthalate), a type of polyester yarn that features 50% recycled content reclaimed from plastic drink bottles
- **Fade-Resistant** – PET yarn has excellent color-fastness and is resistant to fading from repeated washing or cleaning.
- **Stain-Resistant** – PET yarn is naturally stain resistant, making it easy to remove stains from the mat
- **Safe** – Certified high-traction by the National Floor Safety Institute (NFSI)
- Available in 24 colors
- Available with choice of SBR (48 mil) or nitrile rubber (52 mil, 65 mil, 90 mil)

### SIZES

2' x 3'  
3' x 4'  
3' x 5'  
3' x 6'  
3' x 8'  
3' x 10'  
4' x 6'  
4' x 8'  
4' x 10'  
5' x 8'  
5' x 10'  
5' x 12'  
6' x 8'  
6' x 10'  
6' x 12'

Custom sizes up to 40' Sizes are approximate.



Autumn Brown Black Opal Blueberry Frost Browntone Burgundy Berry



Cabot Grey Charcoal Chocolate Cranberry Dark Granite Emerald Green Glen Green Grey Midnight Blue Navy



Platinum Red/Black Silver Slate Solid Black Solid Red Stardust Grey Steel Blue Suede



Indoor



## ENVIRO PLUS®

Carpeted (Wiper)

3/8" Product No. 2202

- **Clean** - Stops dirt and moisture at your door
- **Eco-Friendly** - Surface features PET fabric which is made from post-consumer plastic drink bottles; crumb rubber backing contains 94% recycled rubber
- **Durable** - PET fabric is stain-resistant and fade-resistant
- **Safe** - Certified high-traction by the National Floor Safety Institute (NFSI)
- Available in 8 colors, each with an attractive diamond weave pattern

### SIZES

2' x 3' 4' x 10'  
3' x 4' 4' x 12'  
3' x 5' 4' x 16'  
3' x 8' 4' x 20'  
3' x 10' 6' x 8'  
3' x 12' 6' x 12'  
3' x 16' 6' x 16'  
3' x 20' 6' x 20'  
4' x 6'  
4' x 8'

Sizes are approximate. Additional lengths up to 60'. See price list for all additional sizes.



Black Smoke Chestnut Grey Ash Indigo Khaki Maroon Regal Red Southern Pine





Chocolate



Indoor

## STYLIST

Carpeted (Wiper)

3/8" Product No. 100

- **Eco-Friendly** - Stylist mats are made with PET (polyethylene terephthalate), a type of polyester yarn that features 50% recycled content reclaimed from plastic drink bottles
- **Fade-Resistant** - PET yarn has excellent colorfastness and is resistant to fading
- **Stain-Resistant** - PET yarn is naturally stain resistant, making it easy to remove stains from the mat
- Designed to release dirt easily with daily vacuuming, or can be cleaned with a commercial carpet cleaning system; not launderable
- Available in 24 colors with 70-mil smooth vinyl backing

### SIZES

2' x 3'  
3' x 4'  
3' x 5'  
3' x 6'  
3' x 8'  
3' x 10'  
4' x 6'  
4' x 8'  
4' x 10'  
5' x 8'  
5' x 10'  
5' x 12'  
6' x 8'  
6' x 10'  
6' x 12'

Custom sizes up to 40'

Sizes are approximate.



Autumn Brown Black Opal Blueberry Frost Browntone Burgundy Berry



Cabot Grey Charcoal Chocolate Cranberry Dark Granite Emerald Green Glen Green Grey Midnight Blue Navy



Platinum Red/Black Silver Slate Solid Black Solid Red Stardust Grey Steel Blue Suede



Indoor



Academy Blue



## IMPRESSIONIST

Carpeted (Wiper)

3/8" Product No. 871

- Durable olefin yarn resists fading and straining
- Designed to release dirt easily with daily vacuuming, or can be cleaned with commercial carpet cleaning system; not launderable
- Available in 8 colors with 70-mil smooth vinyl backing

### SIZES

2' x 3' 4' x 6'  
3' x 4' 4' x 8'  
3' x 5' 3' x 60'  
3' x 6' 4' x 60'  
3' x 10'

Sizes are approximate.

See price list for all additional sizes. 3' and 4' in lengths up to 60'. 6' widths lengths up to 40'.



Academy Blue Black Burgundy Cardinal Forest Green Navy Sable Salt & Pepper





Indoor

## COBBLESTONE

Carpeted (Wiper)

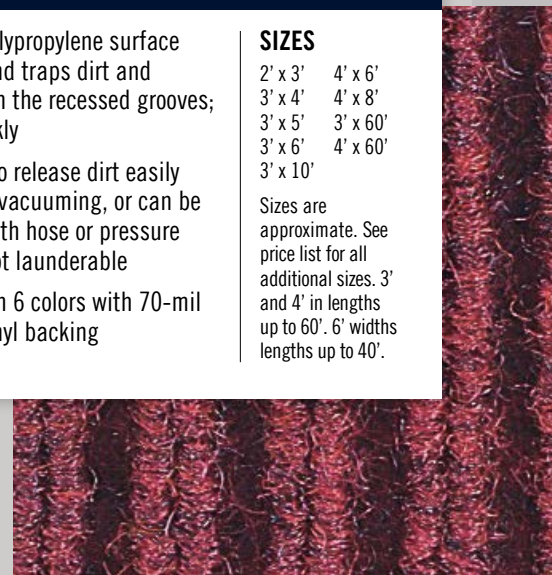
3/8" Product No. 870

- Durable polypropylene surface scrapes and traps dirt and moisture in the recessed grooves; dries quickly
- Designed to release dirt easily with daily vacuuming, or can be cleaned with hose or pressure washer; not launderable
- Available in 6 colors with 70-mil smooth vinyl backing

### SIZES

2' x 3' 4' x 6'  
 3' x 4' 4' x 8'  
 3' x 5' 3' x 60'  
 3' x 6' 4' x 60'  
 3' x 10'

Sizes are approximate. See price list for all additional sizes. 3' and 4' in lengths up to 60'. 6' widths lengths up to 40'.



Blue

Brick

Brownstone

Charcoal

Green

Silver

## VICTORY

Carpeted (Wiper)

3/8" Product No. 873

- Durable polypropylene surface scrapes and traps dirt and moisture in the recessed grooves; dries quickly
- Designed to release dirt easily with daily vacuuming, or can be cleaned with commercial carpet cleaning system; not launderable
- Available in 5 colors with 70-mil smooth vinyl backing

### SIZES

2' x 3' 4' x 6'  
 3' x 4' 4' x 8'  
 3' x 5' 3' x 60'  
 3' x 6' 4' x 60'  
 3' x 10'

Sizes are approximate. See price list for all additional sizes. 3' and 4' in lengths up to 60'. 6' widths lengths up to 40'.



Indoor



Victory Burgundy



Blue

Brown

Burgundy

Charcoal

Green







M+A MATTING

## **LOGO MAT COLLECTION**

ColorStar® Impressions

Classic Impressions™ HD

Classic Impressions™ HD Custom Shape

WaterHog Impressions HD®

Berber Roll Goods Inlay

WaterHog® Eco Elite Roll Goods Inlay

WaterHog® Inlay

WaterHog® Legacy Inlay

SuperScrape™ Impressions

Hog Heaven® Impressions

## M+A Matting offers numerous types of logo mats.

Each of these logo mat processes result in high quality products your customers will be very proud to use. Pricing is calculated by each individual design number and quantity. Different size logo mats and standard mats may not be combined for quantity discount.

### Ordering Logo Mats is as easy as 1-2-3:

- 1) Visit [www.mamattng.com](http://www.mamattng.com) to submit your logo file using our easy to use web page.
- 2) Select **Submit Design** from **My Account** menu and log into your account.
- 3) Complete the necessary information on the submit page, attach your logo file and then click on **“Send your design”**. Artwork should be 300 dpi or greater.

Your proof will be emailed back to you within 24 business hours. Once your proof arrives by email, please take the following simple steps:

- 1) Approve or make necessary changes to the proof.
- 2) Return the art proof with any changes or approved art proof with purchase order and quantity of mats to [artwork5@mamattng.com](mailto:artwork5@mamattng.com).

Acceptable	Unacceptable	Marginal
Vector Graphic Files:	Faxes	Color Prints*
AI, EPS, PDF, CDR, SVG	Emblems	Newspaper Ads
Image Files:	Copies of Emblems	Yellow Pages Ads
TIFF (600 DPI/PPI)	Banners	Business Cards
JPG (600 DPI/PPI)	Flags	
PNG (600 DPI/PPI)	Full Size Mats	
Black/White Ad Slicks	Badges	
Letterhead	Shirts	
Brochures	Hats	
Business Literature		

\*Color prints, if available, may be submitted to show color placement for a design.

## Create your own proofs with M+A Matting Mobile App!

Visit your app store and search “M+A Matting” to download app.



### M+A MATTING MOBILE APP

M+A Matting mobile app provides an easy way for users to search and view existing mat designs as well as create proofs using simple tools. Each user will be able to:

- Create proofs using the mobile device camera or by loading an image from their library
- Have access to a personal dashboard that saves all current and former artwork submissions associated with their account
- Get instant artwork approval using e-signature feature
- Track orders of designs that were created via the mobile app
- Filter search results by product category, size or mat orientation

M+A Matting’s user friendly app is compatible with any mobile device. Below is a condensed list of compatible devices:

- Android
- Android tablets
- iPhone\*
- iPad\*
- iPod Touch\*

\*all Apple products require iOS 6.0 or later



Indoor

# COLORSTAR® IMPRESSIONS

Logo - Carpeted (Wiper)

3/8" SBR Rubber Backing

Product No. 60

- **Photographic-Quality Printing** - Logos and designs are digitally printed at 76 dpi (dots per inch), making fine details, shading, and 3-D images achievable
- **Eco-Friendly** - PET (polyethylene terephthalate) carpet surface contains 50% post-consumer recycled content reclaimed from plastic bottles
- **Fade Resistant** - PET yarn has excellent color-fastness and is resistant to fading from repeated washing/cleaning
- **Stain Resistant** - PET yarn is naturally resistant to staining
- **Safe** - Certified high-traction by the National Floor Safety Institute (NFSI)
- Choose from 60 standard colors
- SBR (48 mil) rubber backing; also available with nitrile rubber backing

## SIZES

- 2' x 3'
- 3' x 4'
- 3' x 5'
- 3' x 10'
- 4' x 6'
- 4' x 8'
- 5' x 8'
- 5' x 10'
- 6' x 10'
- 6' x 12'

See price list for all additional sizes.

Sizes are approximate.



## CLASSIC IMPRESSIONS™ HD

Logo - Carpeted (Wiper)

3/8" SBR rubber border and backing  
3/8" Vinyl border and backing

Product No. 73  
Product No. 73



## CLASSIC IMPRESSIONS™ HD CUSTOM SHAPE

3/8" Nitrile rubber backing

Product No. 733

- **Photographic-Quality Print** – Logos and designs are digitally printed with photographic quality; fine details, shading, and 3D images can be achieved
- **Safe** - Certified high-traction by the National Floor Safety Institute (NFSI)
- **Resilient** – High-twist, heat-set nylon (32-ounces/square yard) resists crushing to better trap dirt and extend the useful life of the mat
- Choose from 150 standard colors available
- Available with SBR or vinyl backing; custom shape mats have 90-mil rubber backing
- Available in 10 standard sizes and custom sizes in widths of 3', 4', 5', and 6' and lengths up to 40'
- Custom shape mats are available in sizes up to 6' wide and 23' long

### SIZES

2' x 3'  
3' x 4'  
3' x 5'  
3' x 10'  
4' x 6'  
4' x 8'  
5' x 8'  
5' x 10'  
6' x 10'  
6' x 12'

Sizes are approximate. See price list for all additional sizes. PMS custom color available at an additional charge.



Classic Impressions HD Logo  
Custom Shape





WaterHog  
Impressions HD with  
Classic Border

## WATERHOG IMPRESSIONS HD®

Logo • Scraper/Wiper

3/8" Classic Border    Product No. 2381  
3/8" Fashion Border    Product No. 2380



Indoor or Outdoor



Color options

- **Clean & Dry** – Bi-level surface effectively scrapes dirt and moisture from shoes, trapping it beneath shoe level to prevent tracking; water dam border holds moisture keeping it off your floors (WaterHog mats can hold up to 1.5 gallons of water per square yard)
- **Durable** – Reinforced rubber nubs prevent pile from crushing and extend the performance life of the mat
- **Safe** – Beveled edges provide a safe transition from floor to mat; certified high-traction by the National Floor Safety Institute (NFSI)
- 57 standard color options; available with choice of classic rubber border or fashion fabric border
- Features 65-mil nitrile rubber with choice of smooth or universal cleated backing

### SIZES

2' x 3'    4' x 6'  
3' x 4'    4' x 8'  
3' x 5'    6' x 8'  
3' x 10'    6' x 10'  
3' x 12'    6' x 12'  
3' x 16'    6' x 16'  
3' x 20'    6' x 20'

See price list for all additional sizes.

Sizes are approximate.





## BERBER ROLL GOODS INLAY

Logo • Carpeted (Wiper)

3/8" Product No. 2283



Indoor or Outdoor

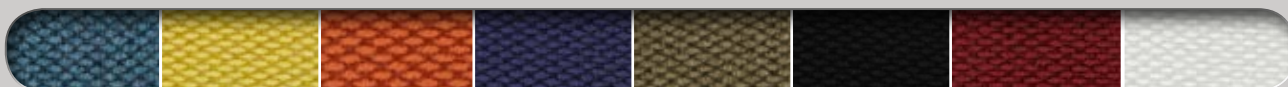
- **Durable** - Heavy 52-ounce solution-dyed fabric is stain resistant and has excellent light fastness; tough enough for outdoor use
- **Attractive** - Loop pile "berber" construction features a hobnail design for an upscale look
- **Safe** - High-performance rubber backing helps hold the mat in place to minimize slipping hazards
- **Easy to Clean** - Polypropylene fabric is naturally resistant to staining and fading
- 17 colors to choose from
- Available in custom sizes up to 12' X 50'
- Designed to be installed like carpeting or loose laid like a mat; available with singed borders or vinyl nosing (sold separately)

**CUSTOM SIZES** available in 3' to 12' widths in sizes up to 12' x 50'. See price list for additional information. Sizes are approximate.

Widths over 6' will be seamed.



Bright Red    Burgundy    Charcoal    Dark Blue    Dark Brown    Dark Green    Emerald Green    Gold    Grey



Light Blue    Light Yellow    Orange    Purple    Sand    Solid Black    Solid Red    White





Waterhog Eco Elite Logo  
Sothern Pine

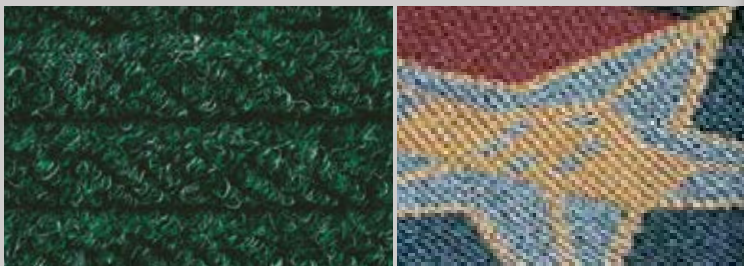
## WATERHOG® ECO ELITE ROLL GOODS INLAY

Logo • Scraper/Wiper

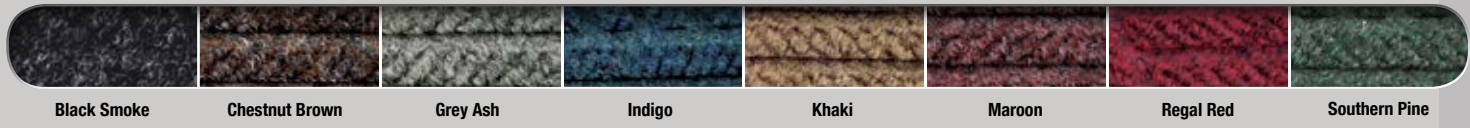
**3/8" Product No. 2268**

- **Clean & Dry** - Bi-level surface effectively scrapes dirt and moisture from shoes, trapping it beneath shoe level to prevent tracking; water dam border holds moisture keeping it off your floors (WaterHog mats can hold up to 1.5 gallons of water per square yard)
- **Durable & Fade Resistant** - Reinforced rubber nubs prevent pile from crushing and extend the performance life of the mat; solution-dyed fabric is fade-resistant
- **Safe** - Beveled edges provide a safe transition from floor to mat; certified high-traction by the National Floor Safety Institute (NFSI)
- 17 logo colors and 8 background colors to choose from
- Features 78-mil SBR smooth rubber backing
- Designed to be installed like carpeting or loose-laid like a mat; vinyl nosing available for border (sold separately)

**CUSTOM SIZES**  
Available in 3' to 12' widths in sizes up to 12' x 50'. See price list for additional information.  
Sizes are approximate.



**BACKGROUND COLORS**



**LOGO COLORS**



# WATERHOG® INLAY

Logo · Scraper/Wiper



Indoor or Outdoor

3/8" Classic (rubber border)  
3/8" Fashion (fabric border)

Product No. 234  
Product No. 235

- **Clean & Dry** - Bi-level surface effectively scrapes dirt and moisture from shoes, trapping it beneath shoe level to prevent tracking; water dam border holds moisture keeping it off your floors (WaterHog mats can hold up to 1.5 gallons of water per square yard)
- **Durable & Fade Resistant** - Reinforced rubber nubs prevent pile from crushing and extend the performance life of the mat; solution-dyed fabric is fade-resistant
- **Safe** - Beveled edges provide a safe transition from floor to mat; certified high-traction by the National Floor Safety Institute (NFSI)
- **Eco-Friendly** - Rubber backing contains 20% post-consumer recycled rubber from car tires
- 19 fabric colors to choose from
- Available with choice of classic rubber border or fashion fabric border

## SIZES

2' x 3'    4' x 10'  
3' x 4'    4' x 12'  
3' x 5'    4' x 16'  
3' x 10'    4' x 20'  
3' x 12'    6' x 8'  
3' x 16'    6' x 12'  
3' x 20'    6' x 16'  
4' x 6'    6' x 20'  
4' x 8'

Sizes are approximate. See price list for all additional sizes.



Aquamarine\*    Bluestone    Bordeaux    Camel    Charcoal    Dark Brown    Evergreen    Gold\*    Light Green    Medium Blue



Medium Brown    Medium Grey    Navy    Orange\*    Purple\*    Red/Black    Solid Red\*    White\*    Yellow\*

\*These colors are ONLY available in 3' and 4' widths.



Indoor or Outdoor

# WATERHOG® LEGACY INLAY

Logo · Scraper/Wiper

3/8" Classic (rubber border)  
3/8" Fashion (fabric border)

Product No. 261  
Product No. 262

- **Clean & Dry** - Bi-level surface effectively scrapes dirt and moisture from shoes, trapping it beneath shoe level to prevent tracking; water dam border holds moisture keeping it off your floors (WaterHog mats can hold up to 1.5 gallons of water per square yard)
- **Durable & Fade Resistant** - Reinforced rubber nubs prevent pile from crushing and extend the performance life of the mat; solution-dyed fabric is fade-resistant
- **Safe** - Beveled edges provide a safe transition from floor to mat
- **Eco-Friendly** - Rubber backing contains 20% post-consumer recycled rubber from car tires

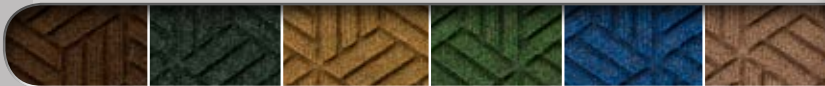
## SIZES

2' x 3'    4' x 10'  
3' x 4'    4' x 12'  
3' x 5'    4' x 16'  
3' x 8'    4' x 20'  
3' x 10'    6' x 6'  
3' x 12'    6' x 8'  
3' x 16'    6' x 10'  
3' x 20'    6' x 12'  
4' x 4'    6' x 16'  
4' x 6'    6' x 20'  
4' x 8'

Sizes are approximate.



Aquamarine\*    Bluestone    Bordeaux    Camel    Charcoal



Dark Brown    Evergreen    Gold\*    Light Green    Medium Blue    Medium Brown



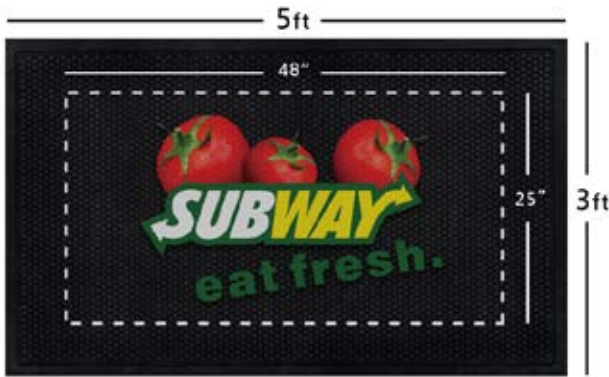
Medium Grey    Navy    Orange\*    Purple\*    Red/Black    Solid Red\*    White\*    Yellow\*

\*These colors are ONLY available in 3' and 4' widths.





Indoor or Outdoor



Visit [mamatting.com](http://mamatting.com) for imprint area and other design specifications.



Indoor



## SUPERSCAPE™ IMPRESSIONS

Logo • Scraper

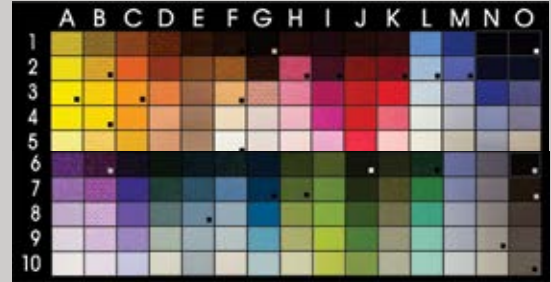
3/16" Product No. 3559

- **Clean** - Surface cleats effectively remove and trap dirt and sand below shoe level to prevent tracking
- **Safe** - Certified high-traction by the National Floor Safety Institute (NFSI)
- **Easy to Clean** - Lightweight flexible design ensures easy handling and cleaning (shake off soil and hose off); can be commercially laundered
- **Features** 3/16" thick nitrile rubber with circular surface cleats

### SIZES

2.5' x 3'  
3' x 4'  
3' x 5'  
3' x 10'  
4' x 6'  
4' x 8'  
6' x 6'  
6' x 8'

Sizes are approximate. PMS custom color available at an additional charge.



## HOG HEAVEN® IMPRESSIONS

Logo • Anti-Fatigue

5/8" Product No. 3422

- **Comfortable** - 5/8" high-density nitrile-blended cushion helps eliminate pressure to the lower back and legs, providing superior comfort
- **Safe** - Certified high-traction by the National Floor Safety Institute (NFSI); edges will not crack or curl and provide a safe transition from floor to mat
- **Durable** - Nitrile-blended cushion provides years of useful service life; cushion is molded, not glued, to the nitrile rubber surface so it will not separate
- **Versatile** - Welding safe; grease/oil resistant; chemical resistant

### SIZES

2' x 3'  
3' x 5'  
3' x 12'  
4' x 6'

Sizes are approximate. See price list for all additional sizes. PMS custom color available at an additional charge.

100%  
customer satisfaction  
GUARANTEED

NFSI  
HIGH-TRACTION

MADE  
IN THE  
USA





**ANTI-FATIGUE MAT &  
SLIP RESISTANT MAT  
COLLECTION**

GetFit StandUp®

Hog Heaven® Plush

Hog Heaven® Fashion

Hog Heaven®

Hog Heaven® Marble

Hog Heaven Prime®

Hog Heaven Prime® Decor

Happy Feet®

Complete Comfort™

Cushion Max™

Cushion Station™

Complete Comfort™ II

Comfort Flow™

Comfort Scrape™

Comfort Flow HD™

Hog Heaven III™ Comfort

Hog Heaven III™ Traffic

Kneeling Comfort™

Safety Scrape™

Traction Tread

Traction Tread Soft

Wet Step®

Sure Cushion

Sure Tread V-Groove

Sure Stride®

Sure Stride® Plush

# The Benefits of ANTI-FATIGUE MATS



**Anti-Fatigue mats** alleviate stress to the back and legs by providing a cushioned surface to stand on.

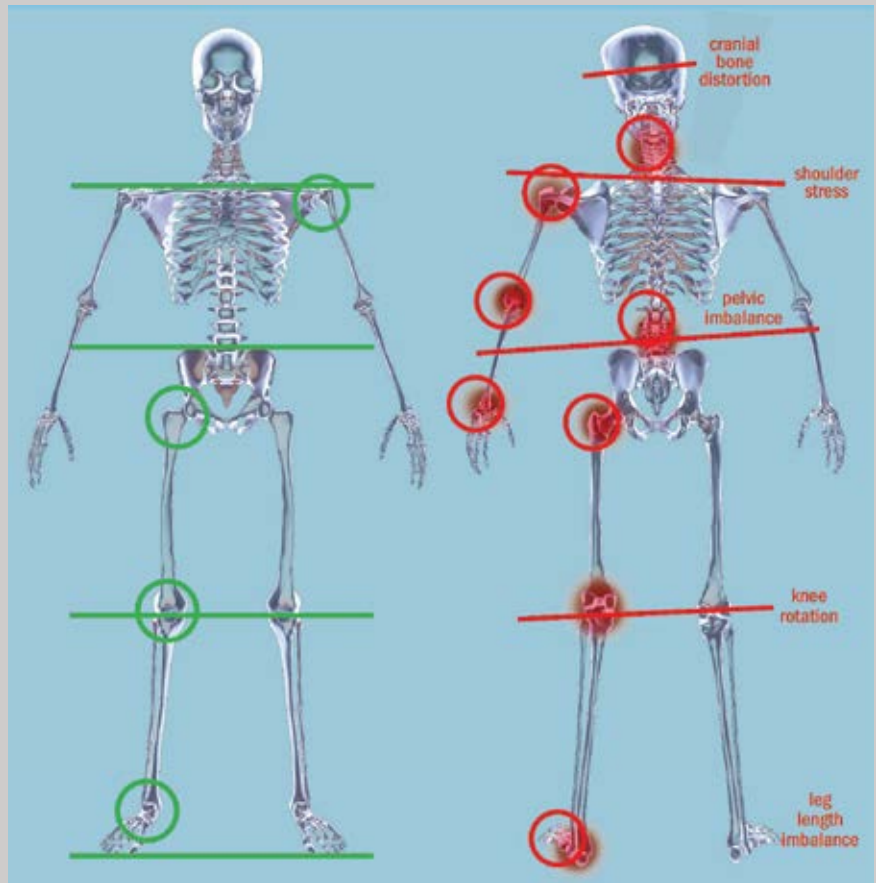
**Anti-Fatigue mats** are perfect for people who have to stand or work in the same place for continual periods of time.

**Anti-Fatigue mats** are recommended for a wide variety of industries and are commonly placed in various applications such as:

- Production or assembly lines
- Stand Up Desks or Workstations
- Kitchens
- Cashier Desks
- Laboratories and many more

**M+A Matting Anti-Fatigue mats** have been shown to do the following:

- **REDUCE ENERGY CONSUMPTION BY UP TO 50%** in the supporting muscles such as those in the leg and the lower back, when compared to standing on a hard floor
- **REDUCE FATIGUE** by promoting subtle movement in the leg and calf muscles, resulting in increased blood and oxygen flow



## BALANCED

- Improves structural alignment and joint function
- Improves muscular balance and prevents nerve impingement
- Reduces uneven wear and tear on joints
- Body weight evenly distributed
- Efficient natural movement
- Reduced pressure on organs

## IMBALANCED

- Neck pain and headaches
- Shoulder restrictions and pain
- Arm and hand pain nerve entrapment
- Bulging discs/back pain
- Uneven pressure/knee pain
- Uneven weight distribution
- Foot and ankle pain



## Safety and Ergonomics

Mats are used throughout facilities in numerous other capacities where safety is a must and anti-fatigue comfort is essential to the health and well being of employees.

- Slip and falls are the second leading cause of all workplace injuries according to Liberty Mutual Workplace Index. As many as 25,000 people a day are victims of slip and fall accidents (NSC)
- Compensation and medical costs associated with employee slip-and-fall accidents total approximately \$70 billion annually (NSC)
- The average cost of a slip and fall injury exceeds \$12,000 (Wausau Insurance)
- The average cost to defend a slip-and-fall lawsuit is \$50,000 (NFSI)
- Back injuries account for 25% of all worker compensation claims annually
- Cumulative Standing Trauma (CST) causes billions of dollars of loss annually due to reduced productivity, increased worker compensation, higher insurance rates, and absenteeism
- According to the American College of Occupational and Environmental Science, about 38% of workers in the United States suffer from fatigue

**Testing shows that ergonomic matting can reduce worker fatigue.**



GetFit StandUp Mat  
Red



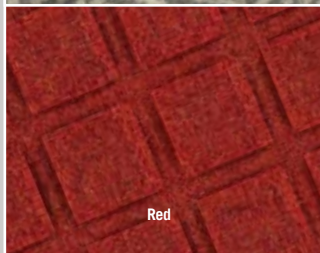
Indoor



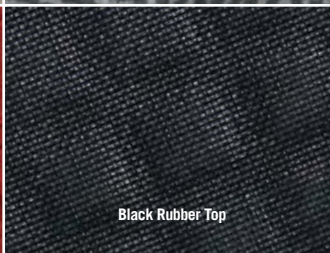
Tan Herringbone



Grey Herringbone



Red



Black Rubber Top

## GETFIT STANDUP™ MAT

Anti-Fatigue

5/8" PET Fabric Top

Product No. 4443

5/8" Rubber Top

Product No. 4447

5/8" Polyester Designer Top

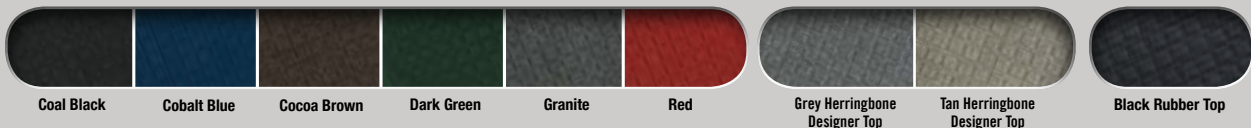
Product No. 4448

- **Comfortable** - 5/8" nitrile-blended cushion provides excellent anti-fatigue properties and alleviates pain from extended standing
- **Safe** - Beveled edges provide a seamless transition from floor to mat; edges will not crack or curl
- **Stain-Resistant** - Recycled PET fabric is eco-friendly and resistant to staining; designer top is resistant to staining
- Available in 3 surface types - an environmentally-friendly PET fabric top (made from recycled plastic bottles), a polyester designer top, or a rubber top for maximum durability. Rubber top is grease/oil resistant\*; chemical resistant; welding safe; ESD rating of electrically conductive; anti-microbially treated for lifetime protection from odors.

### SIZES

22" x 32"  
22" x 50"  
22" x 60"  
34" x 47"  
34" x 60"

\*The 100% nitrile rubber surface of GetFit StandUp (rubber top) is grease/oil proof while the nitrile-blended cushion is grease/oil resistant.



Coal Black

Cobalt Blue

Cocoa Brown

Dark Green

Granite

Red

Grey Herringbone  
Designer Top

Tan Herringbone  
Designer Top

Black Rubber Top



# HOG HEAVEN® PLUSH

Anti-Fatigue

5/8" Product No. 446

7/8" Product No. 447

- **Comfortable** - High-density, closed-cell nitrile-blended cushion helps eliminate pressure to the lower back and legs, providing superior comfort
- **Safe** - Certified high-traction by the National Floor Safety Institute (NFSI); sloped edges provide a safe transition from floor to mat
- **Durable** - Solution-dyed nylon carpet surface is fade-resistant and molded, not glued, to the nitrile-blended cushion so it will not separate
- **Attractive** - Available in five colors to blend with virtually any décor
- Available in 5/8" or 7/8" thicknesses

## SIZES

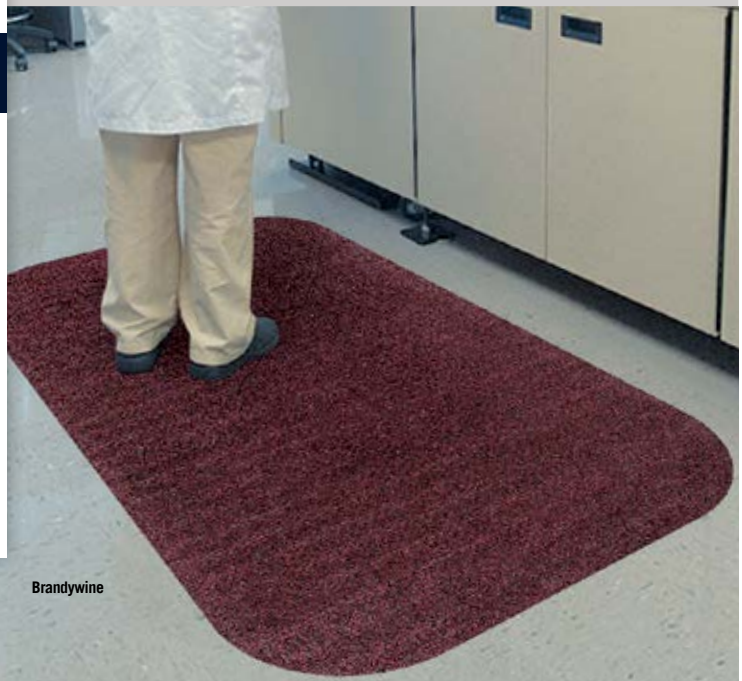
2' x 3'  
3' x 5'  
3' x 12'

Additional lengths up to 60'. See price list for all additional sizes.

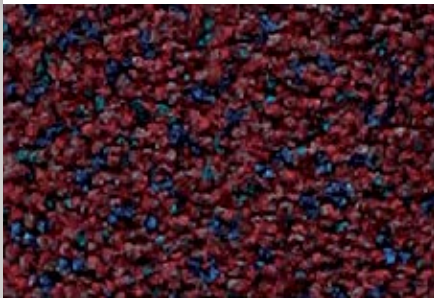
Sizes are approximate.



Indoor



Brandywine



Brandywine

Cinnamon

Confetti Grey

Forest Green

Navy Spice



Indoor



Cobalt Blue



Coal Black

Cobalt Blue

Cocoa Brown

Granite

# HOG HEAVEN® FASHION

Anti-Fatigue

5/8" Product No. 441

7/8" Product No. 442

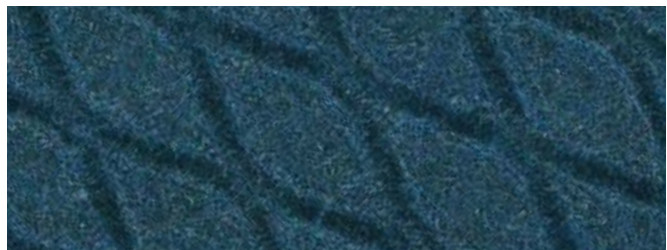
- **Comfortable** - High-density, closed-cell nitrile-blended cushion helps eliminate pressure to the lower back and legs, providing superior comfort
- **Safe** - Certified high-traction by the National Floor Safety Institute (NFSI); edges will not crack or curl and provide a safe transition from floor to mat
- **Durable** - Solution-dyed fabric surface is fade-resistant and molded, not glued, to the nitrile-blended cushion so it will not separate
- **Attractive** - Available in four neutral colors to blend with virtually any décor
- Available in 5/8" or 7/8" thicknesses

## SIZES

2' x 3'  
3' x 5'  
3' x 12'

Additional lengths up to 60'. See price list for all additional sizes.

Sizes are approximate.





# HOG HEAVEN®

Anti-Fatigue · Slip-Resistant



Indoor

5/8" Black Border	Product No. 421
5/8" Striped Border	Product No. 423
7/8" Black Border	Product No. 422
7/8" Striped Border	Product No. 424

- **Comfortable** - High-density nitrile-blended cushion helps eliminate pressure to the lower back and legs, providing superior comfort
- **Safe** - Certified high-traction by the National Floor Safety Institute (NFSI); sloped edges provide a safe transition from floor to mat
- **Durable** - Nitrile-blended cushion provides years of useful service life; cushion is molded, not glued, to the nitrile rubber surface so it will not separate; edges will not crack or curl
- **Versatile** - Welding safe; ESD rating of electrically conductive; chemical resistant; surface is grease/oil proof and cushion is grease/oil resistant
- Available in 5/8" or 7/8" thicknesses with solid black or with OSHA-approved caution yellow borders on two sides

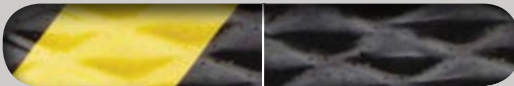
## SIZES

2' x 3'  
 3' x 5'  
 3' x 12'  
 4' x 6'  
 4.8' x 8'  
 Additional lengths up to 60'.  
 See price list for all additional sizes.

Sizes are approximate.



Hog Heaven  
Caution Yellow



Caution Yellow

Black Border





Indoor



Midnight Swirl

## HOG HEAVEN® MARBLE

Anti-Fatigue · Slip-Resistant

5/8" Product No. 448  
7/8" Product No. 449

- **Comfortable** - High-density, closed-cell nitrile-blended cushion helps eliminate pressure to the lower back and legs, providing superior comfort; smooth top allows workers to pivot freely
- **Safe** - Certified high-traction by the National Floor Safety Institute (NFSI); sloped edges provide a safe transition from floor to mat
- **Durable** - Surface is molded, not glued, to the nitrile-blended cushion so it will not separate
- **Easy to Clean** - Smooth diamond-patterned vinyl surface is easy to clean
- Available in 5/8" or 7/8" thicknesses and four neutral colors to blend with any décor

### SIZES

2' x 3'  
3' x 5'  
3' x 12'  
4' x 6'

Additional lengths up to 60'. See price list for all additional sizes.

Sizes are approximate.



Amber Maple

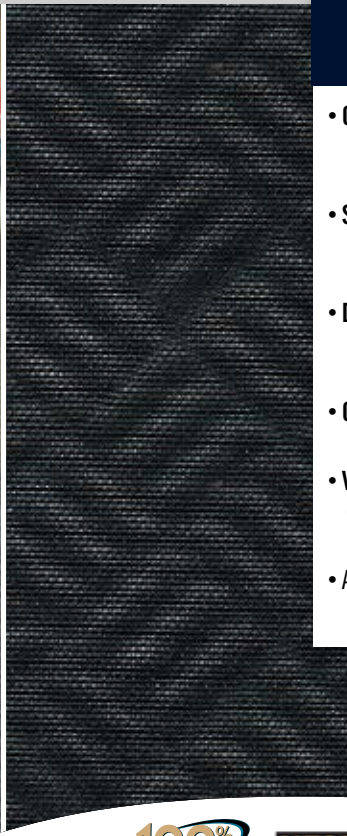
Blue Merle

Granite Dusk

Midnight Swirl



Indoor



## HOG HEAVEN PRIME®

Anti-Fatigue · Slip-Resistant

5/8" Black Product No. 4220  
5/8" Black w/Yellow Striped Border Product No. 4221

- **Comfortable** - 5/8" high-density nitrile-blended cushion runs edge-to-edge and helps eliminate pressure to the lower back and legs, providing superior comfort
- **Safe** - Certified high-traction by the National Floor Safety Institute (NFSI); beveled edges will not crack or curl and provide a safe transition from floor to mat
- **Durable** - Nitrile-blended cushion provides years of useful service life; cushion is molded, not glued, to the nitrile rubber surface so it will not separate
- **Odor-Resistant** - Anti-microbially treated to provide lifetime protection from odors and degradation
- **Versatile** - High-heel safe; welding safe; ESD rating of electrically conductive; chemical resistant; surface is grease/oil proof and cushion is grease/oil resistant
- Available in solid black or with OSHA-approved caution yellow borders on two sides

### SIZES

2' x 3'  
3' x 5'  
3' x 10'

Sizes are approximate.



Black

Yellow Striped Border

# HOG HEAVEN PRIME® DÉCOR

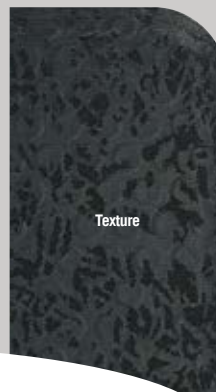
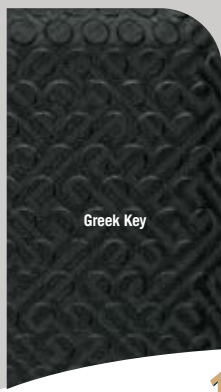
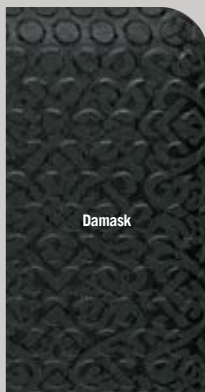
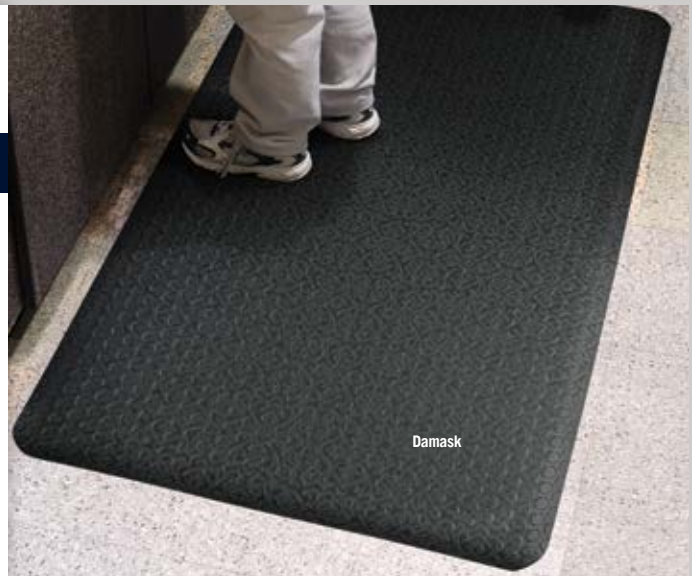
Anti-Fatigue · Slip-Resistant

5/8" Product No. 4222

- **Comfortable** - 5/8" high-density nitrile-blended cushion runs edge-to-edge and helps eliminate pressure to the lower back and legs, providing superior comfort
- **Safe** - Beveled edges provide a safe transition from floor to mat
- **Durable** - Nitrile-blended cushion is molded, not glued, to the woven surface so it will not separate; high-heel safe; stain resistant
- **Attractive** - Available in 7 subtle black and black/grey designs to compliment virtually any décor

### SIZES

2' x 3'  
3' x 5'  
3' x 10'  
Sizes are approximate.

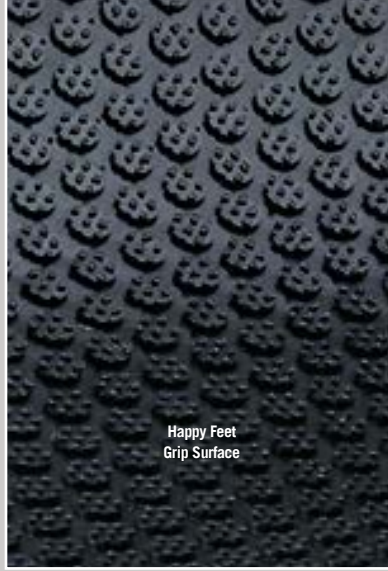


100%  
customer satisfaction  
GUARANTEED

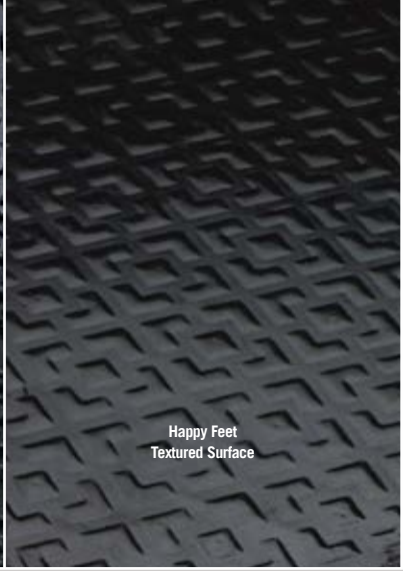
MADE  
IN THE  
USA



Happy Feet  
Textured Surface  
Caution Yellow Border



Happy Feet  
Grip Surface



Happy Feet  
Textured Surface



Happy Feet  
Textured Surface  
Caution Yellow Border



Indoor

## HAPPY FEET®

Anti-Fatigue · Slip-Resistant

### BLACK BORDER

1/2" Textured Surface	Product No. 465
1/2" Grip Surface	Product No. 475

### CAUTION YELLOW BORDER

1/2" Textured Surface	Product No. 466
1/2" Grip Surface	Product No. 476

- **Comfortable** – 1/2" dense foam cushion encapsulated in nitrile rubber provides excellent anti-fatigue qualities
- **Safe** – Certified high-traction by the National Floor Safety Institute (NFSI); low profile beveled edges provide a safe floor-to-mat transition
- **Durable** – Borders will not crack or curl; nitrile rubber surface is penetration proof
- **Versatile** - Welding safe; grease/oil proof; chemical resistant; ESD rating of electrically conductive
- Available in two surface types: textured surface for dry/damp environments or grip surface for wet areas where additional traction is needed; Happy Feet with textured surface can be autoclave sterilized
- Available in solid black or with OSHA-approved caution yellow borders

### MAT SIZES

2' x 3'  
3' x 5'  
Sizes are approximate.

### LINKABLE SIZES

Linkable End  
34" x 59.875"  
Linkable Middle  
34" x 61.25"



Caution Yellow

Black

## COMPLETE COMFORT™

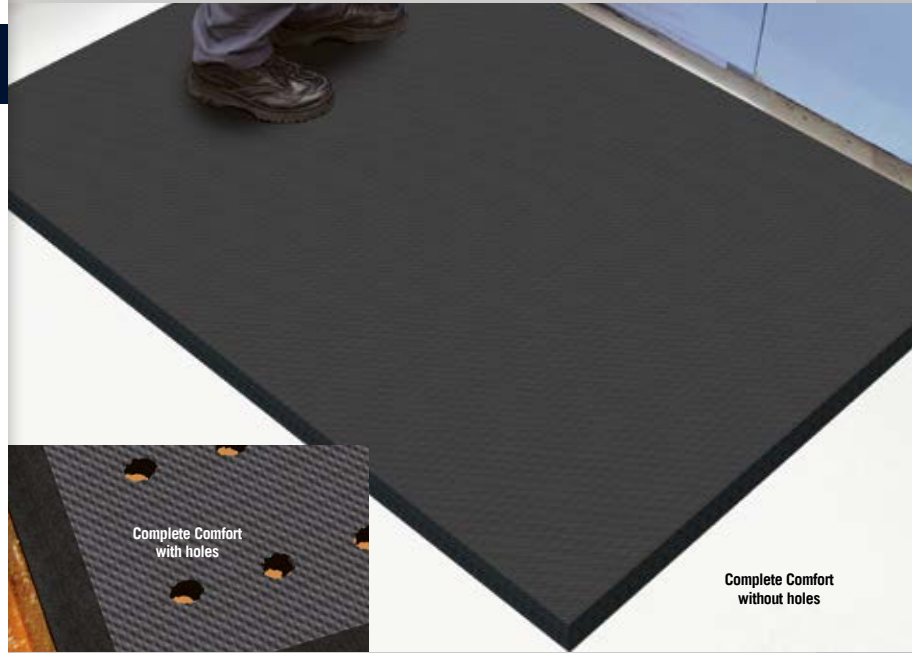
Anti-Fatigue · Slip-Resistant

5/8" without holes Product No. 494  
5/8" with holes Product No. 496

- **Comfortable** - 5/8" thick nitrile/PVC-blended foam provides superior anti-fatigue properties
- **Clean** - Anti-microbial treatment provides lifetime protection from odors and degradation
- **Safe** - Beveled edges provide a safe transition from floor to mat; certified high-traction by the National Floor Safety Institute (NFSI)
- **Easy to Clean** - Lightweight and flexible for easy handling and cleaning
- Grease and oil resistant; chemical resistant
- Available with drainage holes for use in wet areas

### SIZES

2' x 3'  
3' x 4'  
3' x 5'  
3' x 10'  
4' x 6'  
4' x 8'  
3' and 4' widths available in lengths up to 75'. See price list for all additional sizes. Sizes are approximate.



Complete Comfort with holes

Complete Comfort without holes



## CUSHION MAX™

Anti-Fatigue · Slip-Resistant

5/8" with holes Product No. 413  
5/8" without holes Product No. 414

- **Comfortable** - 5/8" nitrile-blended closed-cell foam provides excellent anti-fatigue properties
- **Durable** - Diamond-pattern surface provides increased durability compared to ribbed surfaces which tend to peel and shave
- **Safe** - Beveled edges provide a safe transition from floor to mat; certified high-traction by the National Floor Safety Institute (NFSI)
- Grease and oil resistant; chemical resistant
- Available with drainage holes for wet area applications

### SIZES

2' x 3'  
3' x 5'  
3' x 12'  
4' x 6'

Additional lengths up to 45'. See price list for all additional sizes.

Sizes are approximate.



Cushion Max without holes

Cushion Max without holes

Cushion Max with holes



## CUSHION STATION™

Anti-Fatigue • Slip-Resistant

7/16" without holes      Product No. 370  
7/16" with holes        Product No. 371

- **Comfortable** - 7/16" nitrile foam provides excellent anti-fatigue properties
- **Clean** - Anti-microbial treatment provides lifetime protection from odors and degradation
- **Safe** - Beveled edges provide a safe transition from the floor to the mat; certified high-traction by the National Floor Safety Institute (NFSI)
- **Versatile** - Grease/oil proof; chemical resistant; welding safe
- **Easy to Clean** - Flexible construction makes this mat easy to clean; can be autoclave sterilized
- Available with drainage holes for wet area application

### SIZES

2' x 3.2'  
3.2' x 5.3'  
3.2' x 8.3'  
3.2' x 12.3'  
3.2' x 16.1'  
3.2' x 20.1'  
4' x 5.92'  
4' x 8.3'  
4' x 12.3'  
4' x 16.1'  
4' x 20.1'

Sizes are approximate.



Indoor



Cushion Station with holes



Cushion Station



Cushion Station with holes

## COMPLETE COMFORT™ II

Anti-Fatigue • Slip-Resistant

1/2" Product No. 594

- **Comfortable** - 1/2" thick nitrile foam provides superior anti-fatigue properties
- **Clean** - Anti-microbial treatment provides lifetime protection from odors and degradation
- **Safe** - Beveled edges provide a safe transition from the floor to the mat
- **Versatile** - Grease/oil proof; chemical resistant; welding safe
- **Easy to Clean** - Flexible construction makes this mat easy to handle and clean

### SIZES

2' x 3'  
3' x 4'  
3' x 5'  
4' x 6'

Sizes are approximate.



Indoor



Complete Comfort II Backing



Comfort Flow



Comfort Scrape

## COMFORT FLOW™ & COMFORT SCRAPE™

Slip-Resistant • Anti-Fatigue

3/8"	Comfort Flow	Product No. 420
3/8"	Comfort Scrape	Product No. 430

- **Clean** - Bi-level design traps dirt/debris to prevent tracking; lifetime anti-microbial treatment prevents odors and degradation of the mat
- **Safe** - Beveled edges provide a safe transition from floor to mat; certified high-traction by the National Floor Safety Institute (NFSI)
- **Comfortable** - High-density closed-cell nitrile rubber cushion provides excellent anti-fatigue qualities
- **Versatile** - Grease and oil proof; chemical resistant; welding safe
- **Easy to Clean** - Lightweight flexible design ensures easy handling and cleaning
- Comfort Flow has drainage holes to allow liquids to flow through in wet environments

### SIZES

2' x 3'  
3' x 5'  
4' x 6'  
3' x 9'

Sizes are approximate.



Indoor or Outdoor



Comfort Flow



Comfort Scrape



# COMFORT FLOW™ HD

Slip-Resistant • Flow Through • Anti-Fatigue

1/2" Comfort Flow HD Modular Tile	Product No. 4430
1/2" Comfort Flow HD Linkable Mats	Product No. 4434
1/2" Comfort Flow HD Workstation Mat	Product No. 4439

- **Clean** – Drainage holes allow liquid to flow-through; lifetime anti-microbial treatment prevents odors and degradation of the mat
- **Safe** - Beveled edges provide a safe transition from floor to mat
- **Comfortable** – High-density closed-cell nitrile rubber cushion provides excellent anti-fatigue qualities
- **Versatile** – Grease and oil proof; chemical resistant; welding safe; ESD rating of electrically conductive
- **Easy to Clean** - Lightweight and flexible design ensures easy handling and cleaning
- Available as modular tiles, linkable mats, and workstation mats

## MODULAR TILE SIZES

Corner tile  
19.125" x 19.125" x 5/8"  
37.375" x 37.375" x 5/8"  
Center tile  
18" x 19.125" x 5/8"  
36" x 37.375" x 5/8"  
Middle tile  
18" x 18" x 5/8"  
36" x 36" x 5/8"

## LINKABLE MAT SIZES

Mat End  
37.125" x 39" x 5/8"  
Mat Middle  
36" x 39" x 5/8"

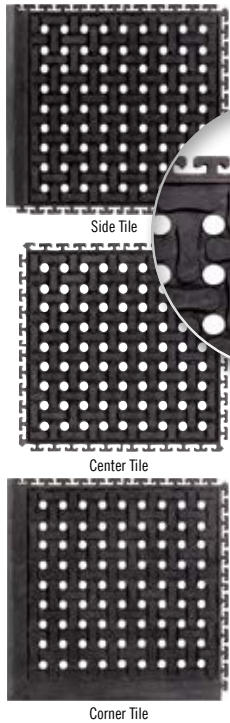
## WORKSTATION MAT SIZES

39" x 39" x 5/8"

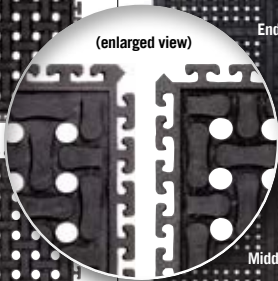
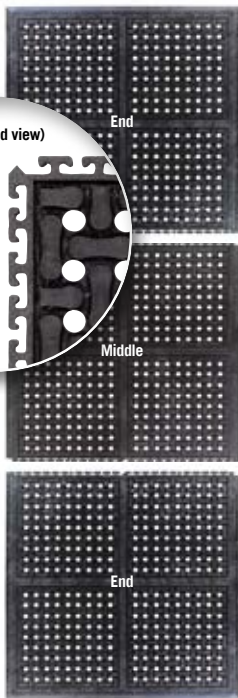


Comfort Flow HD Modular Tile

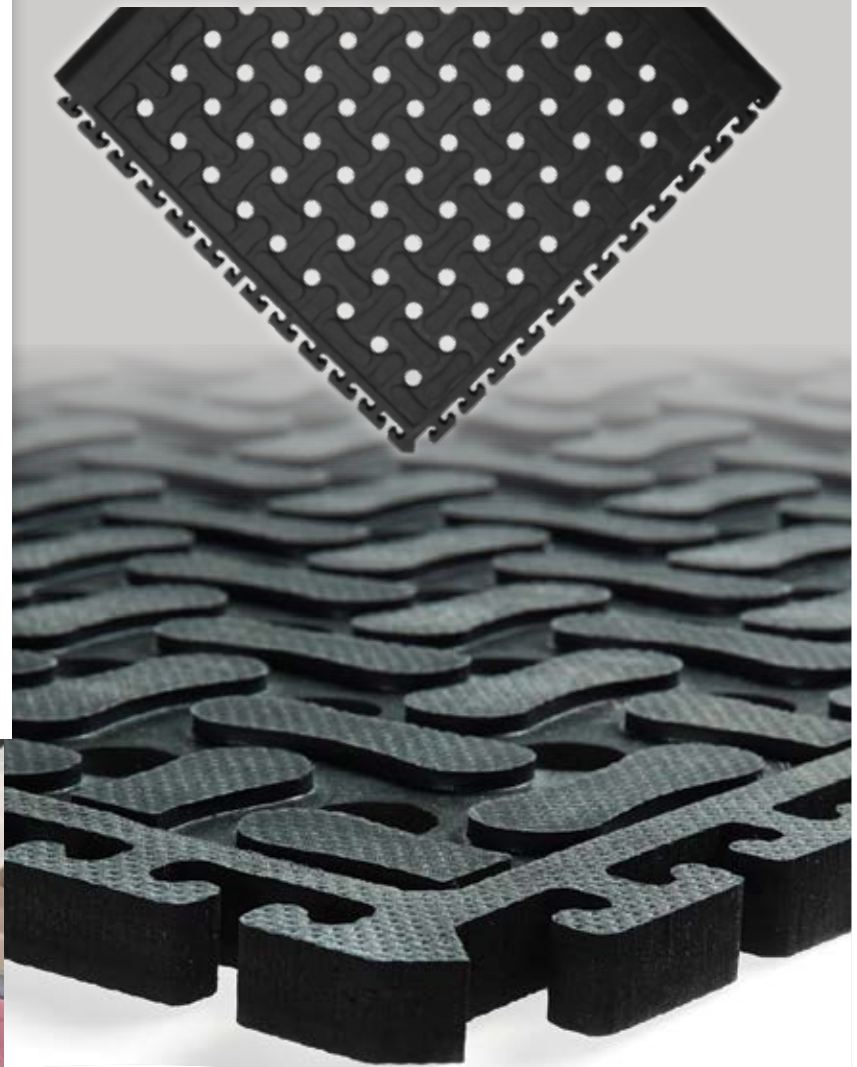
### COMFORT FLOW HD MODULAR TILE



### COMFORT FLOW HD LINKABLE MATS



Indoor or Outdoor



Comfort Flow HD Workstation Mats





Hog Heaven III Comfort Modular Tile  
Caution Yellow Border



Indoor

# HOG HEAVEN III™ COMFORT TILES & MATS

Anti-Fatigue · Slip-Resistant

3/4" Modular Tile 18" x 18"	Product No. 4471
3/4" Modular Tile 36" x 36"	Product No. 4472
3/4" Linkable Mats black border	Product No. 4497
3/4" Linkable Mats Yellow Border	Product No. 4498
3/4" Workstation Black Border	Product No. 4493
3/4" Workstation Yellow Border	Product No. 4494

- **Comfortable** – High-density, closed-cell nitrile rubber cushion provides excellent anti-fatigue qualities to reduce the pain and fatigue associated with standing for long periods of time
- **Safe** - Certified high-traction by the National Floor Safety Institute (NFSI); beveled edges provide a safe transition from floor to mat and will not crack or curl
- **Durable** – Nitrile-blended cushion provides years of useful life and is molded, not glued, to the nitrile rubber surface so it will not separate
- **Versatile** - Welding safe; grease/oil resistant\*; chemical resistant; ESD rating of electrically conductive
- Mats and tiles are 3/4" thick and available with black or OSHA-approved caution yellow border
- Recommended for distribution, manufacturing, and retail facilities for picking lines, assembly lines, workstations, check-out stations, and more

\*The 100% nitrile rubber surface of Hog Heaven III Comfort is grease/oil proof while the nitrile-blended cushion is grease/oil resistant.

## MODULAR TILE SIZES

- 18" x 18"
- Middle-01  
18" x 18" x 3/4"
- Side Black-02  
18" x 21.875" x 3/4"
- Corner Black-03  
21.875" x 21.875" x 3/4"
- Side Yellow-04  
18" x 21.875" x 3/4"
- Corner Yellow-05  
21.875" x 21.875" x 3/4"

- 36" x 36"
- Middle-01  
36" x 36" x 3/4"
- Side Black-02  
36" x 39.875" x 3/4"
- Corner Black-03  
39.875" x 39.875" x 3/4"
- Side Yellow-04  
36" x 39.875" x 3/4"
- Corner Yellow-05  
39.875" x 39.875" x 3/4"

Color: Black with black border or yellow caution border

## LINKABLE MAT SIZES

- Mat End  
39.875 x 43.75" x 3/4"
- Mat Middle  
36" x 43.75" x 3/4"

Color: Black with black border or yellow caution border

## WORKSTATION MAT SIZE

43.75 x 43.75" x 3/4"

US Patent 8,919,054

### HOG HEAVEN III COMFORT MODULAR TILES



### HOG HEAVEN III COMFORT LINKABLE MATS



Hog Heaven III Comfort  
Workstation Mats  
Caution Yellow Border



Hog Heaven III Comfort  
Modular Tiles





Indoor



Hog Heaven III Traffic Modular Tiles

**HOG HEAVEN III TRAFFIC LINKABLE MATS**

Black Border

Caution Yellow Border



**HOG HEAVEN III TRAFFIC MODULAR TILES**



Side Caution Yellow Border



Center



Corner Caution Yellow Border

Hog Heaven III Traffic Modular Tile

**HOG HEAVEN III™ TRAFFIC TILES & MATS**

Anti-Fatigue • Slip-Resistant

5/8"	Modular Tile 18" x 18"	Product No. 4477
5/8"	Modular Tile 36" x 36"	Product No. 4478
5/8"	Linkable Mats Black Border	Product No. 4491
5/8"	Linkable Mats Yellow Border	Product No. 4492

Hog Heaven III Traffic mats and tiles provide a customizable matting solution for workstations with cart traffic. They offer ergonomic qualities yet are firm enough to support traffic from heavy carts.

- **Firm & Durable** – Solid nitrile rubber foam lasts for years, even under heavy cart traffic
- **Comfortable** - High-density, closed-cell nitrile rubber provides anti-fatigue qualities to reduce the pain and fatigue associated with standing for long periods of time
- **Versatile** – Grease/oil proof; chemical resistant; welding safe; ESD rating of electrically conductive
- Mats and tiles are 5/8" thick and available with black or OSHA-approved caution yellow border

**MODULAR TILE SIZES**

- 18" x 18"  
Center-01  
18" x 18" x 5/8"
- Side-02  
18" x 21.875" x 5/8"
- Corner-03  
21.875" x 21.875" x 5/8"
- 36" x 36"  
Middle-01  
36" x 36" x 5/8"
- Side-02  
36" x 39.875" x 5/8"
- Corner-03  
39.875" x 39.875" x 5/8"

**LINKABLE MAT SIZES**

- Mat End  
39.875 x 43.75" x 5/8"
- Mat Middle  
36" x 43.75" x 5/8"
- US Patent 8,919,054



## KNEELING COMFORT™

Anti-Fatigue

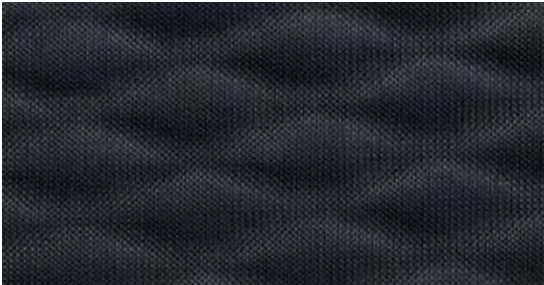
7/8" Product No. 433

- **Comfortable** - 7/8" cushion reduces knee trauma and lower back stress
- **Clean** - Closed-cell nitrile-blended rubber foam will not absorb liquids, and the 100% nitrile rubber surface easily wipes clean with soap and water
- **Durable** - welding safe; chemical resistant; surface is grease/oil proof, cushion is grease/oil resistant Made in the USA
- **Safe** - Certified high-traction by the National Floor Safety Institute (NFSI)
- **Convenient** - Built-in handle enables easy transportation and storage
- ESD rating of electrically conductive

### SIZES

12" x 22"  
18" x 30"

Sizes are approximate.



## SAFETY SCRAPER™

Slip-Resistant

3/16" Product No. 545

- **Clean** - Surface cleats effectively remove and trap dirt and sand below shoe level to prevent tracking
- **Safe** - Certified high-traction by the National Floor Safety Institute (NFSI)
- **Suitable for Harsh Environments** - Grease/oil proof; chemical resistant
- **Easy to Clean** - Lightweight flexible design ensures easy handling and cleaning
- 1/8" nitrile rubber construction

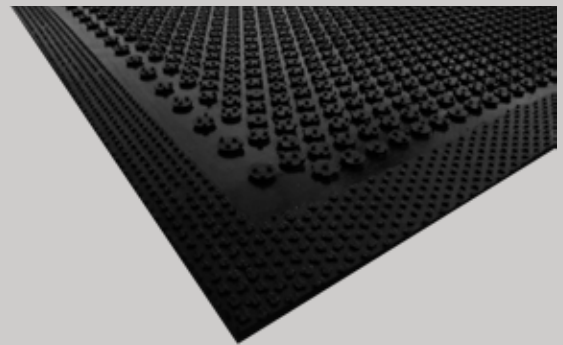
### SIZES

2' x 3'  
3' x 5'  
3' x 10'  
4' x 6'  
4' x 10'

Sizes are approximate.



Indoor or Outdoor



## TRACTION TREAD

Slip-Resistant

1/8" Product No. 50

- **Slip-Resistant & Safe** - Certified high-traction by the National Floor Safety Institute (NFSI)
- **Durable** - 1/8" solid nitrile rubber provides years of service life and will not crack or curl
- **Versatile** - Grease/oil proof; chemical resistant; welding safe
- ESD rating of electrically conductive

### SIZES

2' x 3'  
3' x 5'  
3' x 9'  
3' x 12'  
4' x 6'  
4' x 9'  
4' x 12'

Sizes are approximate.



Indoor



Traction Tread



Traction Tread



Indoor



## TRACTION TREAD SOFT

Slip-Resistant · Anti-Fatigue

1/4" Product No. 56

- **Slip-Resistant & Safe** - Certified high-traction by the National Floor Safety Institute (NFSI)
- **Comfortable** - 1/4" high-density nitrile rubber foam provides excellent anti-fatigue benefits
- **Odor Resistant** - Anti-microbially treated to help prevent odors and degradation
- **Durable** - Nitrile rubber foam provides years of service life and will not crack or curl
- **Versatile** - Grease/oil resistant; chemical resistant; welding safe
- ESD rating of static dissipative

### SIZES

2' x 3'  
3' x 5'  
3' x 9'  
3' x 12'  
4' x 6'  
4' x 9'  
4' x 12'

Sizes are approximate.



Traktion Tread Soft



Indoor or Outdoor



## WET STEP®

Slip-Resistant · Anti-Fatigue

1/4" Product No. 789

- **Slip-Resistant & Safe** - Drainage holes allow water to freely drain away; certified high traction by the National Floor Safety Institute (NFSI)
- **Comfortable** - 1/4" high-density nitrile foam provides excellent anti-fatigue properties and feels great to bare feet
- **Clean** - Anti-microbially treated to help prevent odors and degradation; mold and mildew resistant; anti-fungal
- **Durable** - Nitrile rubber foam is UV resistant and lasts considerably longer than PVC (vinyl) foam
- **Easy to Clean** - Can be autoclave sterilized, commercially laundered, or washed by hand
- Available in blue or grey

### SIZES

17" x 24"  
2' x 3'  
3' x 5'  
3' x 10'  
3' x 20'

Additional lengths up to 20'. See price list for all additional sizes.

Sizes are approximate.



Blue

Grey





Sure Cushion Ribbed

Sure Cushion Texture

Sure Cushion Heavy Duty

Sure Cushion Yellow Border

Sure Tread V-Groove

*\* NOT guaranteed against damage from high heels, casters or chair legs. Not recommended for use in wet areas.*

Floor Protection • Anti-Fatigue

## SURE CUSHION RIBBED

3/8" Product No. 415

- Ribbed PVC foam\*

**SIZES**

2' x 3'	2' x 60'
3' x 5'	3' x 60'
3' x 12'	4' x 60'

Additional lengths up to 60'. See price list for all additional sizes. Sizes are approximate.

## SURE CUSHION TEXTURE

3/8" Product No. 425

- Textured PVC foam\*

**SIZES**

2' x 3'	3' x 12'
3' x 5'	3' x 60'

Additional lengths up to 60'. See price list for all additional sizes. Sizes are approximate.

## SURE CUSHION HEAVY DUTY

1/2" Product No. 428

- PVC foam for heavy use areas\*
- 80 mil solid vinyl surface combined with a non-closed cell vinyl cushion back
- Beveled on all sides for safety

**SIZES**

2' x 3'	3' x 12'
3' x 5'	3' x 60'

Additional lengths up to 60'. See price list for all additional sizes. Sizes are approximate.

## SURE CUSHION YELLOW BORDER

3/8" Product No. 427

- PVC foam with yellow border on two sides\*

**SIZES**

2' x 3'	3' x 12'
3' x 5'	3' x 60'

Additional lengths up to 60'. See price list for all additional sizes. Sizes are approximate.

## SURE TREAD V-GROOVE

1/8" Product No. 505

- Solid vinyl
- Chemical resistant
- Provides protection for all types of floors from abuse due to chairs, tables and foot traffic
- Great for walkways, inclines and ramps
- Can be rolled for easy storage

**SIZES**

3' x 105'
4' x 105'

Additional lengths available. Sizes are approximate.

# SURE STRIDE®

Slip-Resistant

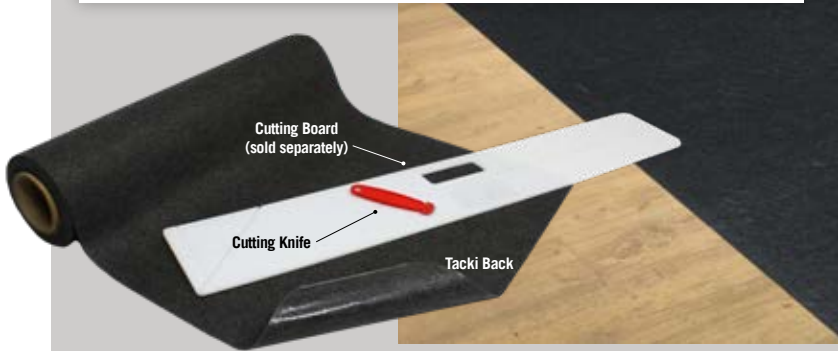


3/32" Sure Stride Product No. 4450  
Cutting Board Product No. 4459  
Cutting Knife Product No. 4460

- **Keeps Floors Dry** - Retains up to 1 gallon of water per 10 linear feet; moisture barrier keeps liquids from soaking through to the floor
- **Stays in Place** - Adhesive backing keeps mat flat and in place, even with heavy cart and buggy traffic
- **Safe** - Certified high-traction by the National Floor Safety Institute (NFSI)
- **Odor Resistant** - Anti-microbially treated for protection from odors
- **Dries Quickly** - Mat dissipates water quickly for fast drying time
- **Easy to Install** - Cut individual mats from the roll as needed
- **Hassle Free** - Can be left in place during daily cleaning; floor scrubbers, vacuums, and mops will pass right over without causing damage
- Will perform for up to 4 months under normal use.

#### SIZE

2' x 25' roll  
3' x 100' roll





## SURE STRIDE® PLUSH

Slip-Resistant - Carpeted (Wiper)

3/16" Product No. 4457



- **Keeps Floors Dry** - Retains more than a gallon of water per 10 linear feet; moisture barrier keeps liquids from soaking through to the floor
- **Stays in Place** - Tacki-Back™ adhesive keeps mat flat and in place, even with heavy cart and buggy traffic
- **Safe** - Certified high-traction by the National Floor Safety Institute (NFSI)
- **Odor Resistant** - Anti-microbially treated for protection from odors
- **Dries Quickly** - Eco-friendly PET fabric dissipates water quickly for fast drying time
- **Easy to Install** - Cut individual mats from the roll as needed
- **Hassle Free** - Can be left in place during daily cleaning; floor scrubbers, vacuums, and mops will pass right over without causing damage
- Will perform up to 4 months under normal use.

**SIZE**  
3' x 30' roll







## **SPECIALTY MATS**

- Clean Stride®
- CleanShield® Urinal and Commode
- WaterHog® Forklift
- WaterHog® Eco Elevator
- Grease Hog
- Melt Step®

**CLEAN STRIDE®**  
Specialty • Scraper/Wiper



Indoor

3/8" Frame Only	Product No. 410
3/8" Frame with Carpet Inserts (60 sheets)	Product No. 411
	Product No. 412

The Clean Stride mat features a WaterHog mat followed by an adhesive surface that captures smaller dust and dirt. Just two steps on a Clean Stride adhesive insert removes over 90% of dirt particles, making this mat ideal for clean rooms, healthcare facilities, school gymnasiums, server rooms, and other areas sensitive to dirt and dust particles.

- **Clean & Dry** - Raised nubs on the WaterHog mat remove dirt and moisture from shoes and trap it below foot level while the adhesive insert removes any remaining dirt or dust particles
- Not recommended for wet areas

**RUBBER FRAME SIZES**  
26.5" x 32"  
36.5" x 46"

**CARPET/RUBBER FRAME SIZES**  
26.5" x 63.5"  
36.5" x 92.5"  
Clean Stride Mat Frames **do not** include Clean Stride Inserts

**INSERT SIZES**  
24" x 30"  
34" x 44"

The Clean Stride adhesive insert is comprised of 60 layers of adhesive coated film. Each layer will perform many times before it must be peeled away. Each layer is numbered to ensure one sheet at a time removal and to indicate the number of layers remaining.



Red/Black





Indoor

## CLEANSHIELD® URINAL & COMMODE MATS

with Seep Guard Tacki Back

Urinal No. 4065  
Commode No. 4055

- **Effective** – Seep-Guard barrier eliminates urine seepage while the Tacki-Back adhesive keeps the mat in place; anti-microbially treated for lifetime odor protection
- **Eco-Friendly** – PET fabric is made from 100% post-consumer recycled plastic bottles
- **Attractive** – Surface features an attractive diamond design
- **Safe** – Certified high-traction by the National Floor Safety Institute (NFSI)
- **Easy-to-read 30-day Timestrip®** indicates when it is time to replace the mat (step on/push to initially activate)

**SIZES**  
17.25" x 20.5"  
21.75 x 22.75"



CleanShield® Urinal Mat



CleanShield® Commode Mat



Timestrip®



Seep Guard Tacki Back





Indoor or Outdoor

## WATERHOG® FORKLIFT

Scraper/Wiper · Slip-Resistant

3/8" Product No. 1253  
3" x 108' Roll Double Sided Tape Product No. 1049

- **Durable** – Reinforced rubber nubs, backing, and fabric top are designed to withstand forklift traffic up to 14,000 pounds
- **Clean and Dry** – Bi-level surface removes dirt and moisture from wheels and trap it to minimize tracking; water dam border holds up to 1.5 gallons of water per square yard, keeping your floors clean, dry, and safe
- **Easy to Install** – Modular mats are easy to install and scalable for large applications; aggressive adhesive taping system (sold separately) keeps tiles from moving
- Available in 6 colors with 100 mil smooth SBR backing

### SIZE

4' x 6'

Sizes are approximate.



DOUBLE SIDED TAPE\* installation system eliminates mat movement. Installation instructions available at [www.mamatting.com](http://www.mamatting.com).

\*Double Sided Tape not included



Charcoal

Dark Brown

Medium Brown

Medium Grey

Navy

Red/Black

## WATERHOG® ECO ELEVATOR

Scraper/Wiper · Slip-Resistant

3/8" Product No. 2298

- **Clean & Dry** - Raised nubs remove dirt, sand, and moisture from shoes and trap it below foot level; water dam border holds up to 1.5 gallons of water per square yard, keeping your floors clean, dry, and safe
- **Noise-Reducing** - Durable rubber border allows for easy, quiet transition of carts and luggage
- **Eco-Friendly** - PET fabric is made from 100% post-consumer recycled plastic from drink bottles, and SBR rubber backing contains 20% recycled rubber from car tires
- **Safe** - Beveled edges provide a safe transition from floor to mat
- **Durable** - Reinforced rubber nubs prevent pile from crushing and extend the performance life of the mat; solution-dyed PET fabric is resistant to staining, dries quickly, and will not fade or rot
- **Easy to Install** - Available in four sizes to fit most standard elevators
- Available in 8 colors with a classic rubber border

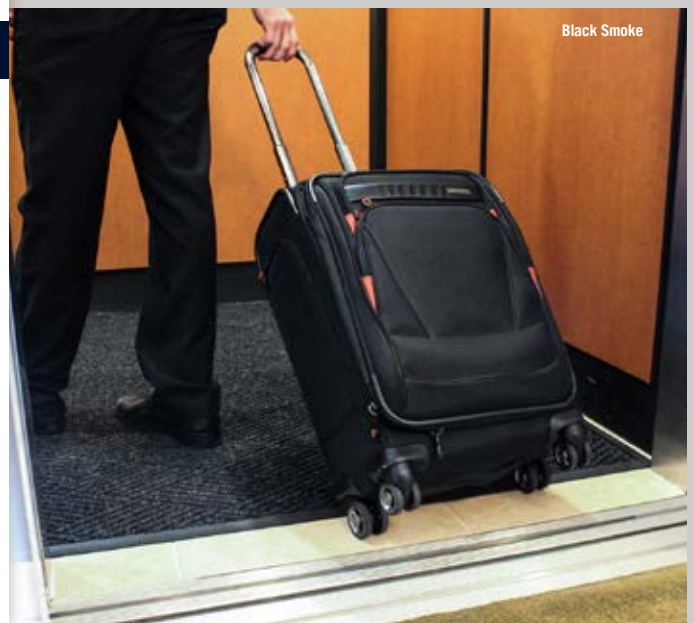
### SIZES

67" x 50"  
79" x 50"  
79" x 56"  
79" x 65"

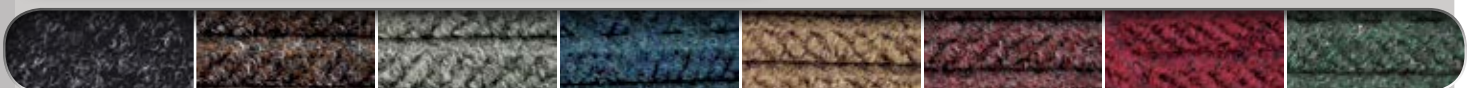
Sizes are approximate.



Indoor



Black Smoke



Black Smoke

Chestnut Brown

Grey Ash

Indigo

Khaki

Maroon

Regal Red

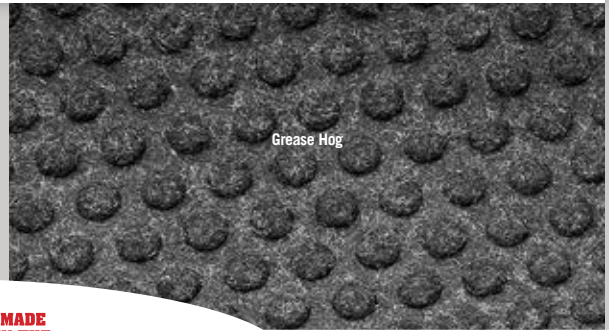
Southern Pine



Indoor



Grease Hog



Grease Hog

## GREASE HOG

Scraper/Wiper - Slip-Resistant

1/4" Product No. 883

- **Clean** - Permanently-molded bi-level surface scrapes grease and dirt from shoes, trapping it beneath show level to prevent tracking
- **Durable** - Reinforced rubber nubs prevent pile from crushing; solution-dyed fabric will not fade or rot; nitrile rubber backing is grease-proof to withstand harsh environments
- **Safe** - Low profile construction ensures easy clearance in doorways; reinforced rubber borders ensure mat will lie flat and edges will not crack and curl
- **Low Maintenance** - Easy to clean and dries quickly

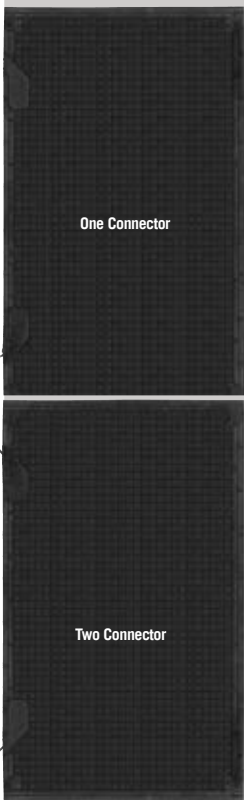
### SIZES

3' x 5'  
3' x 10'

Sizes are approximate.



Outdoor



One Connector

Two Connector



### ACCESSORIES



Melt Step  
6' extension cord



Melt Step  
6' cord + GFCI

## MELT STEP®

Slip-Resistant

3/8" One Connector Product No. 886  
3/8" Two Connector Product No. 887  
Accessories Product No. 889

- **Effective** – Mat will heat to approximately 40-45°F above ambient air temperature
- **Safe** – Waterproof electrical connection system with GFCI switch prevents electrical shock hazard; certified high-traction by the National Floor Safety Institute (NFSI)
- **Durable** – Molded nitrile rubber construction is waterproof, UV-resistant, and flexible even in freezing temperatures
- **Scalable** – Up to 4 mats can be connected in sequence to cover up to 20 linear feet of walkway
- All Melt Step mats are 3' x 5' with choice of one connector or two connectors; unique reversible design of the mat permits electrical connection on the right or left side of the walkway
- 6' power cord (120 volts) with GFCI switch as well as 6' extension cord are both sold separately

### SIZE

3' x 5'  
Sizes are approximate.



## M+A Matting Our Environmental Commitment

M+A Matting is dedicated to environmental stewardship and strives to create a culture of conservation as a manufacturer and global supplier. We have funded and will continue to fund the research and development (R&D) of matting designed to keep facilities safe, clean, and comfortable.

As a leading manufacturer of matting, M+A has established R&D priorities intended to create sustainable products made from recycled materials whenever possible, and continually evaluates operational procedures looking for opportunities to implement practices that conserve resources and minimize waste.

### Conservation Through Innovation

- Our SBR rubber compound contains 20% recycled rubber from car tires.
- Several of our mats are made with PET (polyethylene terephthalate), a synthetic fiber made from post-consumer recycled plastic bottles.
  - » Our 27-ounce PET yarn contains 50% recycled content
  - » Our 30-ounce PET fiber contains 100% recycled content; In 2018, M+A transformed more than 298 million plastic bottles (that might have otherwise ended up in a landfill or ocean) into WaterHog Eco mats.
- In 2018-19, we transitioned our 24-ounce polypropylene to a 24-ounce PET fiber with 100% recycled content. Both the original WaterHog line of mats and the WaterHog Eco line of mats are now made with 100% recycled PET.



### Reuse • Reduce • Recycle



- We recycle nearly 1 million pounds of yarn and other synthetic materials, and approximately 200,000 pounds of paper and cardboard each year.
- Mountville Rubber, M+A Matting's sister company and rubber supplier, recycles approximately 1.25 million pounds of rubber annually.



# About M+A Matting

The M+A name represents two powerful brands – Mountville and Andersen – with nearly a century of combined experience developing and manufacturing mats designed to make environments safer, cleaner, and more comfortable.

## A Brief History

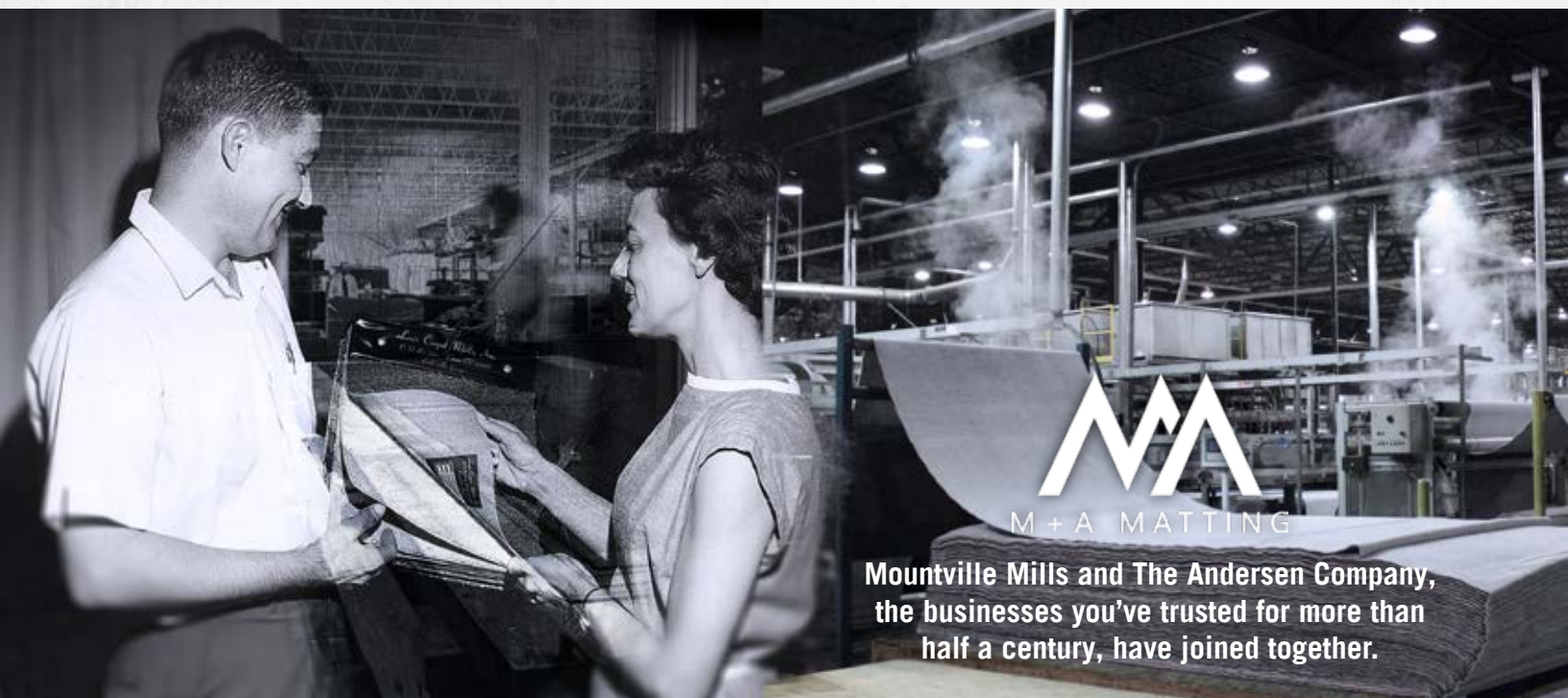
In 1963, the late Emmet Hart, with his wife Nancy by his side, established Mountville Mills. A little over a decade later, in 1974, the late Walter Andersen established The Andersen Company. Throughout the years, the companies drove innovations in their respective markets; Mountville in the textile rental market, and Andersen in the janitorial/sanitary supply markets. Driven by quality, innovation, and customer service, they paved the way for future generations of Harts and Andersens to expand the business. In 1999, these flagship brands joined forces to become the largest mat manufacturer in the world, and in 2018 we made the union official with a name change to M+A Matting.

For decades, we've been a symbol of quality and customer service. We're the driving force in the mat industry, developing the next generation of mats designed to provide superior safety, cleanliness, and comfort to workers and customers across the world. Whether you need entrance matting, logo matting, or anti-fatigue matting, M+A has you covered.

There are three principles that guide every action we take, every decision we make, and every mat we produce:

- Do the right thing.
- Do what is best for the customer.
- Drive improvements and innovation.

It is these core values that drive us to provide our customers with high-performance, high-quality matting and unparalleled customer satisfaction.



**Mountville Mills and The Andersen Company,  
the businesses you've trusted for more than  
half a century, have joined together.**



M + A MATTING

[www.mamatting.com](http://www.mamatting.com)

M+A Matting • 340 Cross Plains BLVD • Dalton, GA 30721  
800.241.4696 • 706.277.2551